

FRANKLIN TRADITIONAL & LOFT CONTEMPORARY  
DIRECT-VENT FIREPLACE INSERTS



AMERICAN HEARTH



### FRANKLIN TRADITIONAL & LOFT CONTEMPORARY

A Direct-Vent Fireplace Insert turns your existing wood-burning fireplace into an efficient gas-fired heat source.

A wood-burning fireplace sends more than half of its heat up the flue, creating negative pressure in your home, which draws in outside air through gaps in doors and windows that actually makes your home colder. A wood-fire can also create ash and fumes that dirty your home and aggravate your allergies.

Direct-Vent Fireplace Inserts are classified as zone heating appliances. Zone heating is inherently more efficient than your existing wood-burning fireplace or your central furnace. Unlike a central furnace, which wastes 20 to 30 percent of the heat energy through ductwork losses and sends much of the remaining heat to unoccupied rooms, zone heating creates and transmits the heat directly into the room. This lets you turn down your whole-house thermostat and use your fireplace insert to efficiently warm the room you use most.

Our Direct-Vent insert uses readily available 3-inch flexible co-linear vent pipes. One draws air from outside your home, and the other sends flue products directly outdoors. The flexible metal venting allows the insert to install easily in a site-built or manufactured fireplace.

Direct-Vent systems eliminate pressure imbalances in the home that can cause drafts that reduce the effectiveness of heating. At up to 77% AFUE, a traditional or contemporary Direct-Vent Insert makes a great heat source for any room in your home.

Fireplace barrier screens, required for all direct-vent systems, protect you and your family from inadvertently touching the hot glass.

## STANDARD FEATURES

We offer our traditional Franklin Direct-Vent Inserts in three sizes – small, medium, and large – to fit most wood-burning fireplaces. Choose Millivolt ignition with standing pilot to provide heat, even in the absence of electric power, or Intermittent Pilot, which eliminates the standing pilot to save even more energy. IP systems can operate with a standing or intermittent pilot during power outages.

Our Franklin Direct-Vent inserts feature hand-painted ceramic fiber logs, nestled atop the variable flame height burner, to create an exceptionally attractive traditional fireplace. Choose an optional brick liner or black porcelain liner to complete your look. With inputs of 20,500 Btu, 26,000 Btu, and 28,500 Btu, the Direct-Vent insert's unique Slope Glaze Burner produces natural flickering flames.

Awaken your inner artist with a Loft Series Contemporary Direct-Vent Insert – in small (20,000 Btu) or medium (27,000 Btu). Choose Millivolt ignition or Intermittent Pilot. The black porcelain lining inside the Loft insert reflects the flame from the contemporary linear burner to create depth and visual interest from any angle.

Surrounds available in Steel (Traditional & Contemporary)

Included Barrier Screen protects against contact with the hot glass.

Slide-on vent plate simplifies installation in tight spaces.



Built-in variable-speed blower automatically cycles on and off to gently and quietly circulate the heat (Standard on Traditional, optional on Contemporary [not shown])

Ceramic fiber Herringbone Liner (Traditional Inserts)

Lancaster Front in Bronze (Traditional Inserts)

Large heat-resistant ceramic glass window provides greater heat transfer.





## Options & Accessories



*Franklin 28,500 Btu Direct-Vent Fireplace Insert shown with Herringbone Liner, 1-Piece Frame in Bronze, and optional Lancaster Decorative Front in Bronze*

## OPTIONS & ACCESSORIES

Your new direct-vent insert will require a surround or decorative front.

Insert surrounds come in three sizes. For Franklin traditional models, choose an old-world style three-piece cast iron surround with rich details, or one of our steel surrounds with either 9-inch top and 6-inch sides, 6-inch top and sides, or 6-inch top and 3-inch sides. For installations where your Franklin insert does not rest on the hearth, we offer a bottom cover to complete the surround.

Decorative Fronts for traditional inserts are available in three styles in black or bronze finishes. Each front attaches in minutes to the 1-piece metal frame (available in Matte Black or Bronze). Included barrier screens protect you and your family from inadvertently touching the hot glass – but without detracting from the overall view of the fireplace.

To cover larger hearth openings, install the optional shroud. At 48 inches wide and just under 38 inches tall, it provides a clean transition between the surround and the existing fireplace. The bottom cover completes the shroud.



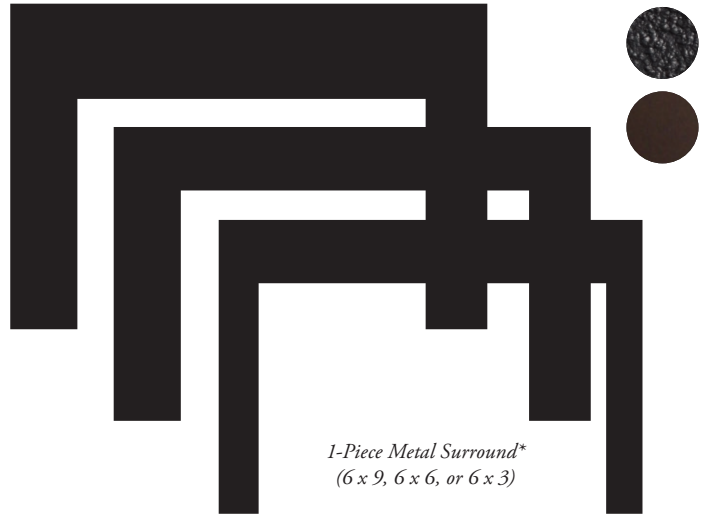
## SURROUNDS FOR FRANKLIN TRADITIONAL INSERTS

Cast Iron Surrounds Available in Matte Black Only

Note: Cast Iron Surrounds require SAK(20, 26, 28) Adapter Kits



*Cast Iron Surround*



*1-Piece Metal Surround\*  
(6 x 9, 6 x 6, or 6 x 3)*

*\*Bottom Covers for 1-piece Metal Surround available in both finishes.*

## DECORATIVE FRONTS, DOORS, OR TRIM FOR FRANKLIN TRADITIONAL INSERTS



*Lancaster Front\*\*  
(Traditional and Loft)*



*Transom Doors\*\**



*Horizon Doors\*\**



*Black Trim (No Front or Doors)*



*Bronze*



*Matte Black*

*\*\*Fronts and Doors require 1-piece Metal Surround for installation. DVC Inserts include protective screen.*

### LINERS FOR FRANKLIN TRADITIONAL INSERTS



*Traditional Brick*



*Herringbone Brick*



*Washed Brick*



*Reflective Black Porcelain*

### CONTROL OPTIONS FOR FRANKLIN & LOFT DIRECT-VENT INSERTS

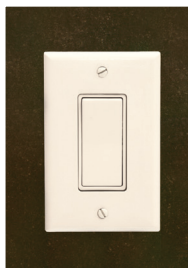
Your Franklin or Loft fireplace insert lights at the flick of a switch to produce consistent, reliable heat, even when electric power fails. Add the convenience of an optional thermostat, wireless wall thermostat, remote control, or thermostat remote control.



*FRBC  
Remote  
Millivolt Only*



*FRBTC  
Thermostat Remote Control  
Millivolt or IP*



*FWS  
Wall Switch  
Millivolt or IP*



*TRW Wireless  
Wall Thermostat  
Millivolt or IP*



*TMV  
Wall Thermostat  
Millivolt or IP*

## DECORATIVE FRONTS FOR LOFT CONTEMPORARY INSERTS

For the Loft DV Insert, choose a matching contemporary surround in all black or in black and stainless steel. The bold stainless steel panels top and bottom accentuate the clean horizontal look of the Loft Insert. Complete your Loft insert with decorative glass – available in Black Polished, Blue Clear, Clear Frost, Bronze Reflective, and Copper Reflective.



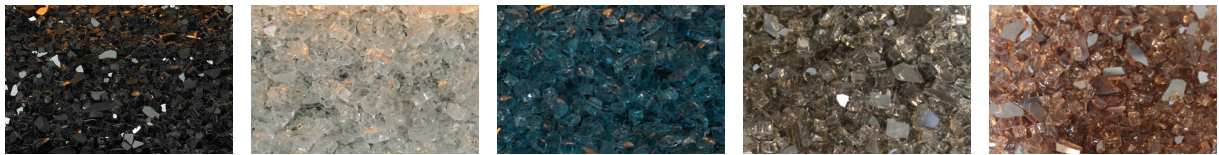
*Eclipse (Top View)*

*Eclipse\*  
(Loft only)*

*\*Requires 1-piece Metal Frame for Installation.*



*Loft Series insert with surround in Matte Black and Stainless Steel*

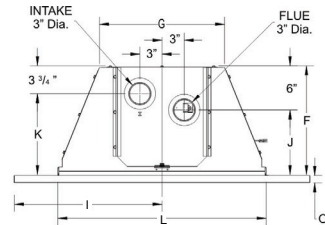
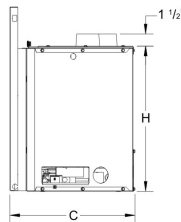
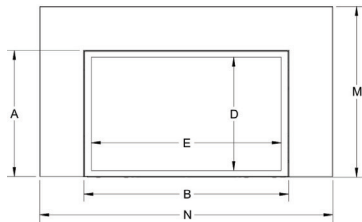


*Decorative Glass for the Loft Series fireplace can be placed on the floor of the firebox and is available in Polished Black, Clear Frost, Blue Clear, Bronze Reflective, and Copper Reflective*

## TRADITIONAL DIRECT-VENT INSERT DIMENSIONS

Model	A	B	C	D	E	F	G	H	I	J	K	L	M	N
DVC20 with 1-in Surround Depth	17 1/4	27 7/8	15 7/8	15 1/2	25 15/16	14 7/8	17	18 1/2	17	8 7/8	11 3/16	28 3/16	23 1/4	34
DVC20 with 2 1/4-in Surround Depth	17 1/4	27 7/8	15 7/8	15 1/2	25 15/16	13 5/8	17	18 1/2	17	7 5/8	9 15/16	28 3/16	23 1/4	34
DVC26IN	20 1/4	30 7/8	17 5/8	18 1/2	28 15/16	16 5/8	18 3/4	21 1/2	18 1/2	10 9/16	12 7/8	31 3/16	26 1/4	37
DVC28IN	22 1/4	33 7/8	17 5/8	20 1/2	31 15/16	16 5/8	21 3/4	23 1/2	20	10 9/16	12 7/8	34 3/16	28 1/4	40

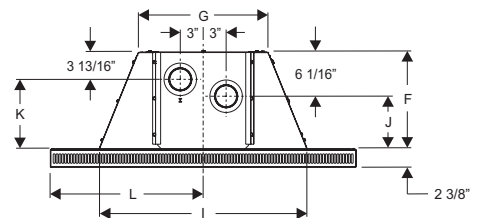
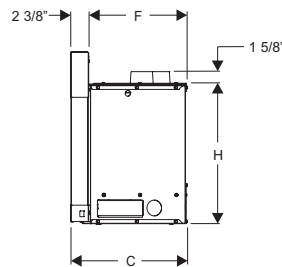
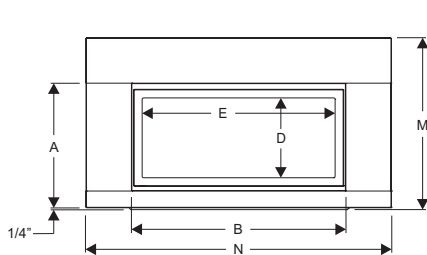
Note: Illustrations shown are based on Direct-Vent models with 6 x 6-inch metal surround.



## LOFT DIRECT-VENT INSERT DIMENSIONS

Model	A	B	C	D	E	F	G	H	I	J	K	L	M	N
DVL25IN	16 1/2	28	15	10 1/2	25 1/4	12 3/4	17	18 5/16	27	6 7/8	9 1/4	20	22 1/2	40
DVL33IN	19 1/2	31	16 1/2	13 1/2	28 1/4	14 1/4	18 3/4	21 5/16	30	8 3/8	10 3/4	21 1/2	25 1/2	43

Note: Illustrations shown are based on Direct-Vent models with 6 x 6 x 2-inch metal surround.

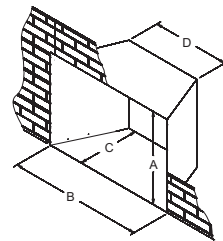


## MINIMUM FIREPLACE OPENING DIMENSIONS

Model	A	B	C	D
DVC20IN	18 1/2	28 1/4	14 7/8 or 13 5/8*	17 1/4
DVC26IN	21 1/2	31 1/4	16 5/8	19
DVC28IN	23 1/2	34 1/4	16 5/8	22
DVL25IN	18 3/8	27 1/2	12 3/4	17 1/4
DVL33IN	21 3/8	30 1/2	14 1/4	19

\*14 7/8 with 1-inch deep surround; 13 5/8 with 2 1/4-inch deep surround.

Note: On Direct-Vent installations, if the fireplace lintel is wider than 8" (203 mm), the height of the fireplace opening must be increased a few inches to allow for a gradual offset in the exhaust and/or intake vent pipes.



Gas Inlet	
Type of Gas	Natural or LP
Iron Pipe Size (N.P.T.)	1/2 inch
Ignition Systems	Standing Pilot/Piezo or IP
Warranty	
10-year limited warranty on combustion chamber, limited lifetime on glass. All other parts carry a three-year limited warranty. All remote controls carry a one-year limited warranty.	

Member of the following industry associations:



This appliance is design-certified to the ANSI standard by:



Empire is committed to continuous product improvement; specifications are subject to change without notice. Dimensions in this brochure are approximate; read and follow the framing dimensions in the owners manual supplied with your Empire product. Flame size, shape, and color will vary from photos. Log Sets shown with Platinum Glowing Embers (PE20) and Ember Bed Kit (EK-1).

918 Freeburg Ave.  
Belleville, IL 62220-2623  
e-mail: info@empirecomfort.com

AH-00832 11/09/18

[www.americanhearth.com](http://www.americanhearth.com)