

VENTED GAS LOGS: SAND PAN BURNER SERIES  
AND SLOPE GLAZE BURNER SERIES



AMERICAN HEARTH



## VENTED GAS LOG SETS AND SAND PAN BURNERS

A Vented Gas Log Set installs in a wood-burning fireplace to provide all the ambiance of a real wood fire, but without the work of hauling in logs, lighting the kindling, tending the fire, and hauling out the ash. You simply light the fire when you want it and turn it off when you're done.

Choose a traditional match-light set – or one of our Manual or Millivolt Systems for even greater operating ease.

### STEP 1: CHOOSE A LOG SET

#### REFRACTORY CONCRETE LOG SETS

- **Available in Six Conventional Styles: Advantage, Great Lakes Oak, Tree House 7, Tree House 11, Pioneer, and Frontier. Skyscraper add-on log sets fill out any fireplace (for use with Advantage Log Set)**
- **Available in Three See-Through Styles: Great Lakes Oak, Tree House 7, Tree House 11**
- **Reinforced Refractory Construction for Long Life and Greater Thermal Mass**
- **Combines Large Logs and Smaller Branches**
- **Cast from Real Logs and Hand Painted for Natural Beauty – includes bark, splits, knots, whorls, and charring**

#### CERAMIC FIBER LOG SETS – KENSINGTON FOREST

- **Lightweight Ceramic Fiber Material Glows Wherever Licked by Flames, Radiates more Heat into the room**
- **Combines Large Logs and Smaller Branches**
- **Richly Detailed Logs Molded from Hand-Carved Masters**
- **Hand Painted for Natural Beauty – includes bark, splits, knots, whorls, and charring**

Refractory logs for Sand Pan Burners carry a limited lifetime warranty against defects in materials and workmanship. Ceramic logs carry a 5-year warranty.

#### LOG SETS FOR SAND PAN BURNERS



Frontier (LFR) Refractory Log Set



Pioneer (LPR) Refractory Log Set





Advantage (LA) Refractory Log Set shown with Triple Burner



Advantage Refractory Log Set shown with Skyscraper (LAV) Accessory Refractory Logs



Treehouse 7 (LTH7) Refractory Log Set



Treehouse 11 (LTH11) Refractory Log Set



Great Lakes Oak (GLO) Refractory Log Set



Kensington Forest (LKF) Ceramic Fiber Log Set

## STEP 2: CHOOSE A MATCHING VENTED SAND PAN BURNER

Our pan burners are constructed from high-quality tube burners covered in a bed of sand – with a sturdy 5/8" wrought iron log support. Gas percolates up through the sand and burns beneath the logs.

All Sand Pan Burners include the burner, log grate, sand, and embers. Triple burners include crushed glass instead of sand.

Radco certified Burners are available in Match Light only, but accept Manual or Millivolt safety pilot valves. Millivolt control works with a wall switch or an on-off remote control.

Underwriters Laboratory (UL) certified burners are available with a factory-installed Manual or Millivolt valve.

Note: Vented gas log sets are certified as decorative appliances, and may not be operated by thermostat.

Non-certified burners come in match light only (36- and 42-inch). Their exceptionally large logs and flames fill out oversize fireplaces. No valves are available.

### TRIPLE BURNERS

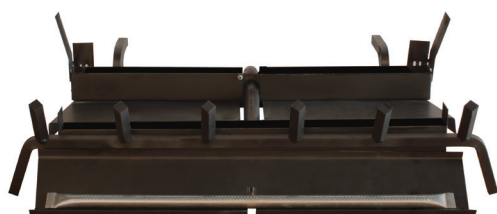
The Triple Burner features two large tube burners, plus a smaller ember bed burner. It creates massive flames to complement the large log sets.

Available in:

Triple Burner Size	Radco Certified* Nat Gas	UL Certified Nat Gas **	Non-Certified Nat Gas only	Fits Log Sets
21-inch	Match-light 75,000 Btu	Manual or Millivolt 75,000 Btu	NA	LA21
24-inch	Match-light 75,000 Btu	Manual or Millivolt 75,000 Btu	NA	LA24, LAV24SSK
30-inch	Match-light 90,000 Btu	Manual or Millivolt 90,000 Btu	NA	LA30, LAV30SSK
36-inch	NA	NA	Match Light only 120,000 Btu	LA36, LAV36SSK
42-inch	NA	NA	Match Light only 140,000 Btu	LA42, LAV42SSK

\* Accepts Manual and Millivolt Nat and LP accessory Valve Kits

\*\* LP Conversion Kits available



Triple Burner (AV)

Match Light (Radco)					
Minimum Fireplace Dimensions for Triple Burners					
Log Set Size	Front	Center	Rear	Depth	Height
21"	26	–	22	18	18
24"	30	–	26	18	19
30"	36	–	30	18	21
36"	42	–	34	18	21
42"	48	–	38	18	21

*This required width allows for centering of the log set. When adding valve kit to burner, add 6" for 18", 24" and 30" log sets front dimension.*

UL Aproved (MV or Man Safety Pilot)					
Minimum Fireplace Dimensions for Triple Burners					
Log Set Size	Front	Center	Rear	Depth	Height
21"	32	24	22	18	18
24"	36	31	26	18	19
30"	42	34	30	18	21

*The center width is the critical dimension in determining the largest set that will fit in a fireplace. The table above indicates the min. center width for each size set.*

## DOUBLE BURNERS

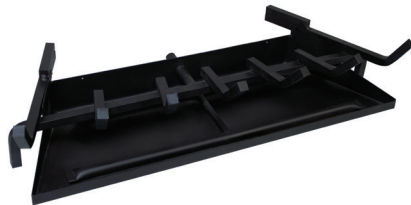
Our Double Burner features two tube burners in a tapered sand pan that fits most conventional fireplaces. It creates large swirling flames with a large ember bed.

Available in:

Double Burner Size	Radco Certified* Nat Gas	UL Certified Nat Gas **	Fits Log Sets
18-inch	Match-light 75,000 Btu	Manual or Millivolt 75,000 Btu	LGLO18, LTH718, LTH1118, LFR18, LPR18
24-inch	Match-light 75,000 Btu	Manual or Millivolt 75,000 Btu	LGLO24, LTH724, LTH1124, LKF, LFR24, LPR24
30-inch	Match-light 90,000 Btu	Manual or Millivolt 90,000 Btu	LTH1130, LTH730, LGLO30, LKF, LFR30, LPR30
36-inch	Match-light 90,000 Btu	NA	LTH1136, LPR36

\* Accepts Manual and Millivolt Nat and LP accessory Valve Kits

\*\* LP Conversion Kits available



Double Burner (BX)

Match Light (Radco)					
Minimum Fireplace Dimensions for Double Burners					
Log Set Size	Front	Center	Rear	Depth	Height
18"	26	–	22	14	18
24"	30	–	26	16	18
30"	36	–	30	18	18
36"	42	–	34	18	18

This required width allows for centering of the log set. When adding valve kit to burner, add 4" for 18" add 6" for 24" and 30" log sets front dimension.

UL Aproved (MV or Man Safety Pilot)					
Minimum Fireplace Dimensions for Double Burners					
Log Set Size	Front	Center	Rear	Depth	Height
18"	30	26	22	14	18
24"	36	33	26	16	18
30"	42	36	30	18	18

The center width is the critical dimension in determining the largest set that will fit in a fireplace. The table above indicates the min center width for each size set.

## SEE-THROUGH BURNERS

Our See-Through Burner features three tube burners in a rectangular sand pan to fit most see-through and peninsula fireplaces. Our see-through Log Sets include a second "Front Log."

Available in:

See-Through Burner Size	Radco Certified* Nat Gas	UL Certified Nat Gas **	Fits See-Through Log Sets
18-inch	Match-light 75,000 Btu	Manual or Millivolt 75,000 Btu	LGLO18ST, LTH718ST, LTH1118ST
24-inch	Match-light 75,000 Btu	Manual or Millivolt 75,000 Btu	LGLO24ST, LTH724ST, LTH1124ST
30-inch	Match-light 90,000 Btu	Manual or Millivolt 90,000 Btu	LGLO30ST, LTH730ST, LTH1130ST

\* Accepts Manual and Millivolt Nat and LP accessory Valve Kits

\*\* LP Conversion Kits available



See-Through Burner (B3)  
(requires See-Through Log Set)



Embers, Rock and Sand  
(included with all Double and See-Through Burners)

Match Light (Radco)					
Minimum Fireplace Dimensions for See-Through Burners					
Log Set Size	Front	Center	Rear	Depth	Height
18"	26	18	18	18	18
24"	30	18	18	18	19
30"	36	18	18	18	21

This required width allows for centering of the log set. When adding valve kit to burner, add 6" for 18", 24" and 30" log sets front dimension.

UL Aproved (MV or Man Safety Pilot)					
Minimum Fireplace Dimensions for See-Through Burners					
Log Set Size	Front	Center	Rear	Depth	Height
18"	32	18	18	18	18
24"	36	18	18	18	19
30"	42	18	18	18	21

This required front width allows for centering of the largest set that will fit in a fireplace.

## Valves Kits & Accessories for Sand Pan Burners

### VALVE KITS FOR RADCO BURNERS

Most Vented Log Sets operate on natural gas. Empire offers conversion kits and valve systems for use with LP. In addition to changing the control, converting to LP requires replacing the burner's sand with light-weight vermiculite on double burner. Conversions should be performed by a trained technician.

Valve Kit, Manual (Radco)	Part No.	Fits
Manual Safety Pilot Kit - Nat (incl Valve, Pilot Assy, Shield, Hardware)	VKV2N	Radco - Double burner BX 18/24/30/36 and See-Thru burner B3 18/24/30
Manual Safety Pilot Kit - LP (incl Valve, Pilot Assy, 2 main orifices (60K & 75K), Air mixer, Shield, Vermiculite, Hardware)	VKV2P	Radco - Double burner BX 18/24/30/36 and See-Thru burner B3 18/24/30
Manual Safety Pilot Kit - Nat (incl Valve, Pilot Assy, Shield, Hardware)	VKV3N	Radco - Triple burner AV 21/24/30 (Nat)
Manual Safety Pilot Kit - LP (incl Valve, Pilot Assy, 2 main orifices (60K & 75K)	VKV3P	Radco - Triple burner AV 21/24/30 (LP)

Valve Kit, Millivolt (Radco)	Part No.	Fits
Millivolt Valve Kit - Nat (incl Valve, Pilot Assy, Shield, Hardware)	VKMN	Radco - Triple burner AV 21/24/30, Double burner BX 18/24/30 and See-Thru burner B3 18/24/30
Millivolt Valve Kit - LP (incl Valve, Pilot Assy, 2 main orifices (60K & 75K), Air mixer, Shield, Vermiculite, Hardware)	VKMVP	Radco - Triple burner AV 21/24/30, Double burner BX 18/24/30 and See-Thru burner B3 18/24/30

#### Sand Pan Burner/Log Sets Limited Warranty (for pages 2-6)

Lifetime Warranty – Refractory Logs  
5-Year Warranty – Burners and Grates, Ceramic Logs  
2-Year Warranty – Valves  
1-Year Warranty – Remote Controls, Accessories, and Parts

#### Gas Inlet

Type of Gas      Natural

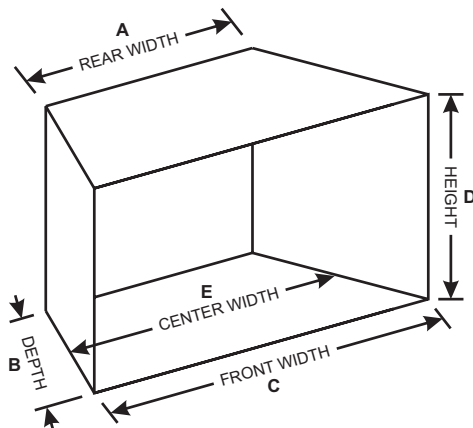
#### Installation and Safety

Refer to your Owner's Manual for complete installation including minimum firebox dimensions and safety information.

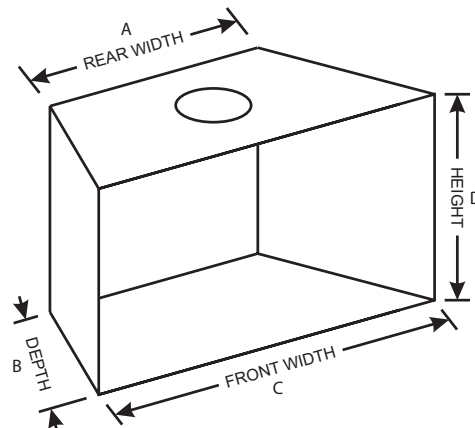
### BURNER AND LOG REFERENCE CHART

Log Model No.	Double	Triple	See-Through
LGL	18, 24, 30		18, 24, 30
LTH7	18, 24, 30		18, 24, 30
LTH11	18, 24, 30, 36		18, 24, 30
LFR	18, 24, 30		
LPR	18, 24, 30, 36		
LKF	24, 30		
LA		21, 24, 30, 36, 42	

### MEASURING MINIMUM FIREBOX DIMENSIONS



UL Certified Burners



Radco Certified Burners



### SLOPE GLAZE VENTED BURNERS AND GAS LOG SETS

A vented gas log set makes a great alternative to the hassle of building a log fire in your wood-burning fireplace. Just like a wood fire, a vented gas log set provides plenty of mesmerizing flames and flickering light. And when you are ready for bed, just flick the switch to turn it off – no waiting for the embers to die down. Vented log sets are considered decorative systems and must be installed in a vented fireplace with the damper open and may not operate by thermostat.

- Available in LP and Natural Gas in 18, 24, and 30-inch models - up to 75,000 Btu
- UL listed and include either a rear-mounted manual or millivolt valve
- On/off remote control or wall switch for Millivolt Vented Burners
- Choose from log sets in refractory concrete and Burncrete®



Super Stacked Wildwood Refractory Log Set (LS24WRS)



Driftwood Burncrete® Log Set (LS24CD)



Williamsburg Refractory Log Set (ALS24CR2)



Saratoga Refractory Log Set (ALS24SG)

## STEP 1: SELECT YOUR LOG SET *(Requires Slope Glaze Burner)*

Model	Log Set Description	Required Burner Size	Ship Wt. (lb)
<b>Refractory</b>			
ALS18CR1	Charleston, 6-piece	18	36
ALS24CR1	Charleston, 6-piece	24	44
ALS30CR1	Charleston, 6-piece	30	61
ALS18CR1S	Charleston Select, 8-piece	18	55
ALS24CR1S	Charleston Select, 8-piece	24	59
ALS30CR1S	Charleston Select, 8-piece	30	69
ALS18CR2	Williamsburg, 13-piece	18	55
ALS24CR2	Williamsburg, 13-piece	24	60
ALS30CR2	Williamsburg, 13-piece	30	66
ALS18RV	Ravenwood, 8-piece	18	37
ALS24RV	Ravenwood, 8-piece	24	40
ALS30RV	Ravenwood, 8-piece	30	50
ALS24RVS	Ravenwood Select, 9-piece	24	56
ALS30RVS	Ravenwood Select, 9-piece	30	66
ALS18SG	Saratoga, 10-piece	18	41
ALS24SG	Saratoga, 10-piece	24	47
ALS30SG	Saratoga, 10-piece	30	55
ALS18YK	Yorktown, 5-piece	18	42
ALS24YK	Yorktown, 5-piece	24	47
ALS30YK	Yorktown, 5-piece	30	56
LS18WRR	Stacked Wildwood, 5-piece	18	35
LS24WRR	Stacked Wildwood, 5-piece	24	42
LS30WRR	Stacked Wildwood, 5-piece	30	51
LS18WRS	Super Stacked Wildwood, 7-piece	18	39
LS24WRS	Super Stacked Wildwood, 7-piece	24	52
LS30WRS	Super Stacked Wildwood, 7-piece	30	57
<b>Burncrete®</b>			
LS18CD	Driftwood, 8-piece	18	27
LS24CD	Driftwood, 10-piece	24	33
LS30CD	Driftwood, 10-piece	30	39

## STEP 2: SELECT YOUR VENTED SLOPE GLAZE BURNER *(For use with open flue only)*

Model	Description	Log Length (inches)	Btu Input	Minimum Firebox Dimensions			
				Front Width (inches)	Rear Width (inches)	Depth (inches)	Height (inches)
On/Off Millivolt, Standing Pilot							
VSR18	Slope Glaze Vented Burner	18	40,000/65,000	28	17	15	22
VSR24	Slope Glaze Vented Burner	24	50,000/75,000	30	23	15	22
VSR30	Slope Glaze Vented Burner	30	60,000/75,000	34	26	15	22

Slope Glaze Limited Warranty <i>(pages 7-8)</i>	Gas Inlet		Installation & Safety
3-Year Warranty – All Vented Slope Glaze Log Sets and Burners	Type of Gas	Natural / LP	Refer to your Owner's Manual for complete installation (including minimum firebox dimensions) and safety information.
1-Year Parts Warranty – Remote Control Systems	Ignition System	Standing Pilot	

Member of the following industry associations:



Empire is committed to continuous product improvement; specifications are subject to change without notice. Dimensions in this brochure are approximate; read and follow the framing dimensions in the owners manual supplied with your Empire product. Flame size, shape, and color will vary from photos.



SINCE 1932

918 Freeburg Ave.  
Belleville, IL 62220-2623  
e-mail: info@empirecomfort.com

AH-00958 10/08/18

**americanhearth.com**