



Forest
HILLS

Traditional & Contemporary
PORTRAIT-STYLE DIRECT-VENT FIREPLACES



Forest Hills Contemporary Fireplace with Piazza Bowl in White and Beveled Window Frame in Brushed Nickel





PORTRAIT-STYLE DIRECT-VENT FIREPLACES

Forest Hills Traditional & Forest Hills Contemporary

With its clean vertical lines the Forest Hills Portrait Fireplace adds a striking design element to your home décor. Available in Contemporary and Traditional models, these unique fireplaces offer several designer options to let you create your perfect fireplace.

In the contemporary models, the vertical motif carries through to the interior where multiple folds in the porcelain liner add to the impression of height. The rich black porcelain reflects the fire to create depth and enhance visual interest from any position in the room. The dual burner system resides in the earthenware Piazza vessel filled with your choice of crushed glass. Choose a black or white vessel and add one or more colors of crushed glass.

For a more conventional fireplace, choose the traditional model with its realistic hand-painted log set and ceiling-mounted accent lighting. Add the Rustic Banded Brick or Old World Stone liner – or the Black Porcelain liner which reflects the flame to create even greater visual interest. The available andirons help convey an old-world look.

All Forest Hills fireplaces include a multifunction thermostat remote control that can vary the flame height of the main burner. The remote lets you vary the accent lighting system or the optional blower, and even operate an unrelated appliance – such as a lamp or holiday decorations plugged into the outlet beneath the fireplace.

The clean-face design allows tile or stonework to the edge of the window frame.

LINERS

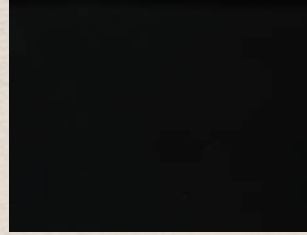
For Forest Hills traditional fireplace models, choose a hand-painted ceramic fiber liner in rugged Old World Stone or Rustic Banded Brick. Or select a Black Porcelain liner to enhance the illusion of flame and depth.



Old World Stone

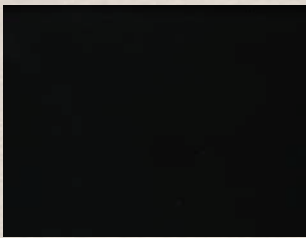


Rustic Banded Brick



Black Porcelain

The Forest Hills contemporary fireplace comes with a black porcelain liner – to add depth and increase the reflective surface.



Black Porcelain

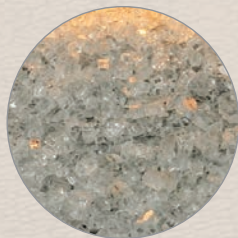
DECORATIVE GLASS & ACCESSORIES

Complete your contemporary fireplace with decorative glass – available in a variety of colors to let you mix and match to create a look that's just right. Additional colors are available through your local hearth dealer.

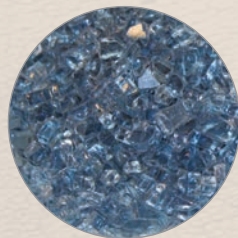
Or add some old-world style to your traditional fireplace with elegant, hand-forged andirons.



Black Crushed



White Crushed



Blue Crushed

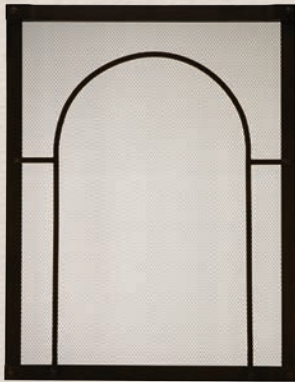


Decorative Andirons

FRONTS & FRAMES

Your portrait fireplace requires a decorative front or frame, which includes a barrier screen to prevent accidental contact with the hot glass.

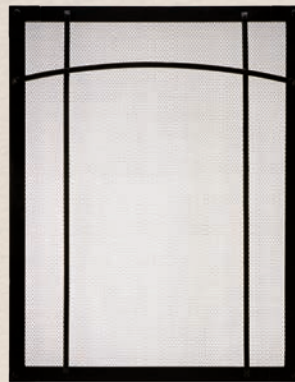
Choose from four styles in three finishes including hand-forged black copper, natural iron, and brushed nickel.



Cathedral Front
in Black Copper



Beveled Window Frame
in Brushed Nickel



Portico Front
in Natural Iron



Floating Front
in Brushed Nickel



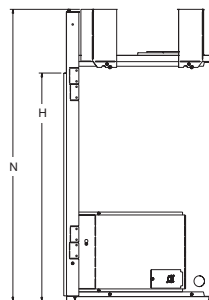
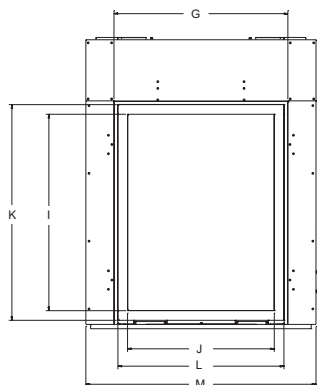
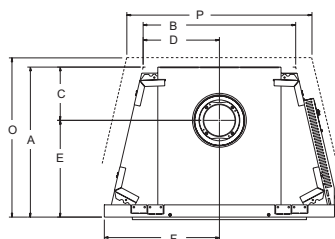
Forest Hills Traditional Fireplace with Old World Stone Liner and Cathedral Front in Black Copper

Dimensions		
DIMENSION	DVTL27FP	DVLL27FP
A	24-3/8"	24-3/8"
B	23-3/4"	23-3/4"
C	8-11/16"	8-11/16"
D	12-3/8"	12-3/8"
E	15-3/4"	15-3/4"
F	18-11/16"	18-11/16"
G	28-1/4"	28-1/4"
H	37"	37"
I	31-7/8"	31-7/8"
J	23-3/4"	23-3/4"
K	35"	35"
L	27"	27"
M	37-3/8"	37-3/8"
N	47-3/8"	47-3/8"

Btus (Max / Min)		
	DVTL27FP	DVLL27FP
Natural	36,000 / 11,500	34,000 / 10,000
LP	36,000 / 11,000	34,000 / 12,000

Framing Dimensions		
	DVTL27FP	DVLL27FP
M	37-7/8"	37-7/8"
N	47-5/8"	47-5/8"
O	26"	26"
P	29-1/2"	29-1/2"

Specifications	
Type of Gas (State on Order)	Natural or LP
Iron Pipe Size (N.P.T.)	1/2-inch
Ignition Systems	Multi Function Remote with IP
Venting	5 x 8 inch



Warranty

10-year limited warranty on combustion chamber, limited lifetime on glass. All other parts carry a three-year limited warranty.

Member of the following industry associations:



This appliance is design-certified to the ANSI standard by:



Empire is committed to continuous product improvement; specifications are subject to change without notice. Dimensions in this brochure are approximate; read and follow the framing dimensions in the owners manual supplied with your Empire product. Flame size, shape, and color will vary from photos. Our mantels feature natural veneers and hand-rubbed finishes - wood grain and color will vary. Adjust light levels and use "natural light" incandescent bulbs to enhance the dramatic look for your wooden mantel.

Empire Comfort Systems Inc.
918 Freeburg Ave.
Bellefonte, IL 62220-2623
info@empirecomfort.com
WMH-00960 5/15/15