



INSTALLATION INSTRUCTIONS

(SEE HOMEOWNER MANUAL FOR OPERATING INSTRUCTIONS)

INSTALLER:

Leave this manual with the appliance.

CONSUMER:

Retain this manual for future reference.

⚠ WARNING

FIRE OR EXPLOSION HAZARD

Failure to follow safety warnings exactly could result in serious injury, death, or property damage.

- Do not store or use gasoline or other flammable vapors and liquids in the vicinity of this or any other appliance.
- **WHAT TO DO IF YOU SMELL GAS**
 - Do not try to light any appliance.
 - Do not touch any electrical switch; do not use any phone in your building.
 - Leave the building immediately.
 - Immediately call your gas supplier from a neighbor's phone. Follow the gas supplier's instructions.
 - If you cannot reach your gas supplier, call the fire department.
- Installation and service must be performed by a qualified installer, service agency or the gas supplier.

LOG SET MODEL

LS(36,40)TINF

For Use With
DVCT(36,40) Fireplaces



NOTICE: Ceramic logs may differ in appearance from those shown in this manual.

⚠ WARNING

If not installed, operated and maintained in accordance with the manufacturer's instructions, this product could expose you to substances in fuel or from fuel combustion which can cause death or serious illness.















NATIONAL
FIREPLACE
INSTITUTE



CERTIFIED
www.nficertified.org

We suggest that our gas hearth products be installed and serviced by professionals who are certified in the U.S. by the National Fireplace Institute® (NFI) as NFI Gas Specialists.

LOG IDENTIFICATION

| DVCT36 PART# | DVCT40 PART# | FRONT | TOP |
|-----------------|-----------------|--|--|
| 37262 | 37068 |  Ember Bed (A) |  Ember Bed (A) |
| 37714 | 37078 |  Log (B) |  Log (B) |
| 37712 | 37076 |  Ember Bed (C) |  Ember Bed (C) |
| 37713 | 37077 |  Ember Bed (D) |  Ember Bed (D) |
| 37715 | 37079 |  Log (E) |  Log (E) |
| 37716 | 37080 |  Log (F) |  Log (F) |
| 37717 | 37081 |  Log (G) |  Log (G) |

USE ONLY MANUFACTURER'S REPLACEMENT PARTS. USE OF ANY OTHER PARTS COULD CAUSE INJURY OR DEATH.

Attention: When ordering parts, it is very important that **part number** and **description** of part coincide.

LOG IDENTIFICATION

| DVCT36 PART# | DVCT40 PART# | FRONT | TOP |
|-----------------|-----------------|--|--|
| 37718 | 37082 |  Log (H) |  Log (H) |
| 37719 | 37083 |  Log (I) |  Log (I) |
| 37720 | 37084 |  Log (J) |  Log (J) |
| 37721 | 37085 |  Log (K) |  Log (K) |
| 37722 | 37086 |  Log (L) |  Log (L) |
| 37723 | 37087 |  Log (M) |  Log (M) |
| 37724 | 37088 |  Log (N) |  Log (N) |
| 36747 | Coals (100) |  | |

USE ONLY MANUFACTURER'S REPLACEMENT PARTS. USE OF ANY OTHER PARTS COULD CAUSE INJURY OR DEATH.

Attention: When ordering parts, it is very important that **part number** and **description** of part coincide.

LOG AND EMBER PLACEMENT

NOTE: Install liners before logs. See separate Liner Installation manual for details.

⚠ CAUTION

Do not handle these logs with your bare hands. Always wear gloves to prevent skin irritation from ceramic fibers. After handling the logs, wash your hands gently with soap and water to remove any trace of fibers.

Accessing the Interior of the Fireplace

See Homeowners Manual for instruction on how to remove the barrier screen and glass door.

Log Set Installation

The positioning of the logs is critical to the safe and clean operation of this fireplace. Sooting and other problems may result if the logs are not properly and firmly positioned in the fireplace. Please refer to **(Figure 1)** and the following WARNING when completing log placement instructions. For step by step log placement instructions, **(See Pages 5 - 21)**.

⚠ WARNING

Failure to position the parts in accordance with this diagram or failure to use only parts specifically approved with this fireplace may result in property damage or personal injury.

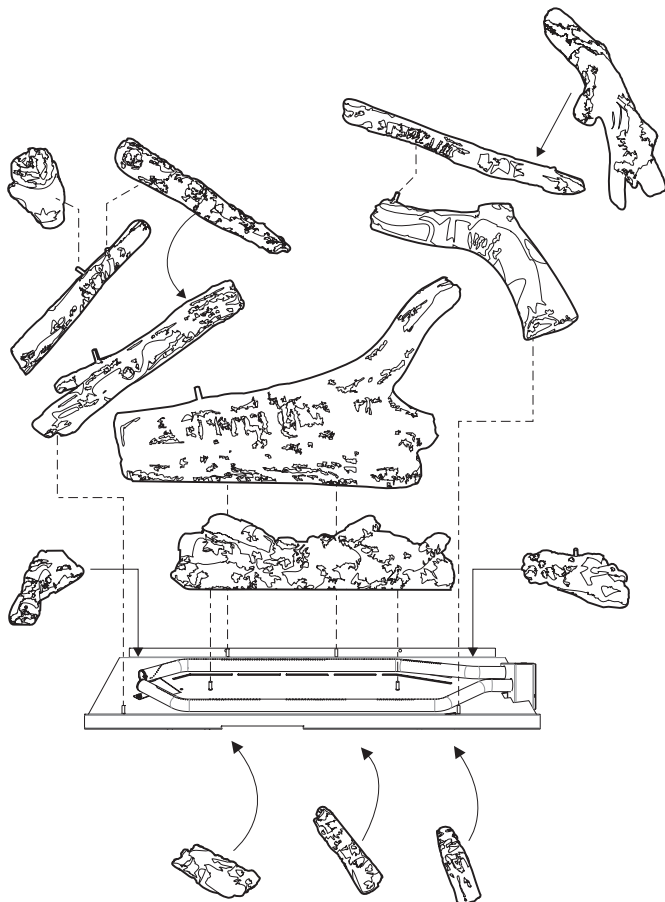


Figure 1

Burner Pin Location

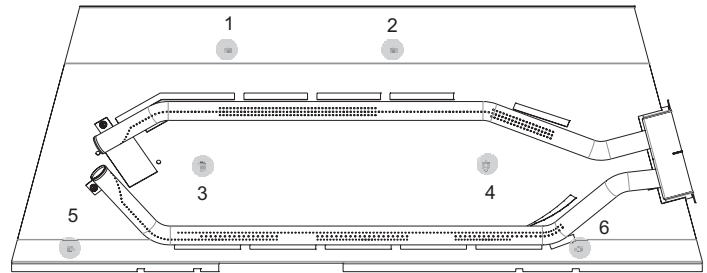


Figure 2

Glowing Embers Information

1. Carefully separate the ember material into small amounts (no larger than "dime-size" pieces).
 - a. Fluffed up pieces of ember material one layer thick will produce the best ember glow. Do not place more than one layer of ember material onto the burner. Excess ember material will decrease the ember glow effect.
 - b. Save any remaining ember material for future applications (as needed).

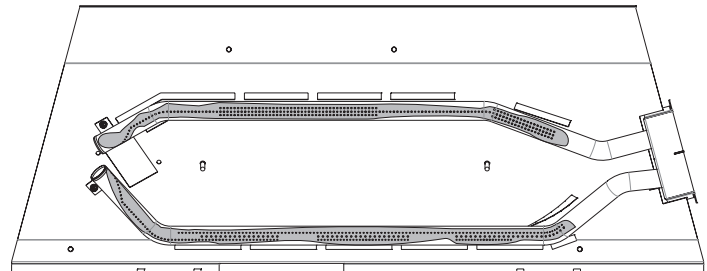


Figure 3

LOG AND EMBER PLACEMENT

1. Place **Ember Bed (A)** onto burner **Pins 3 and 4**.



TOP



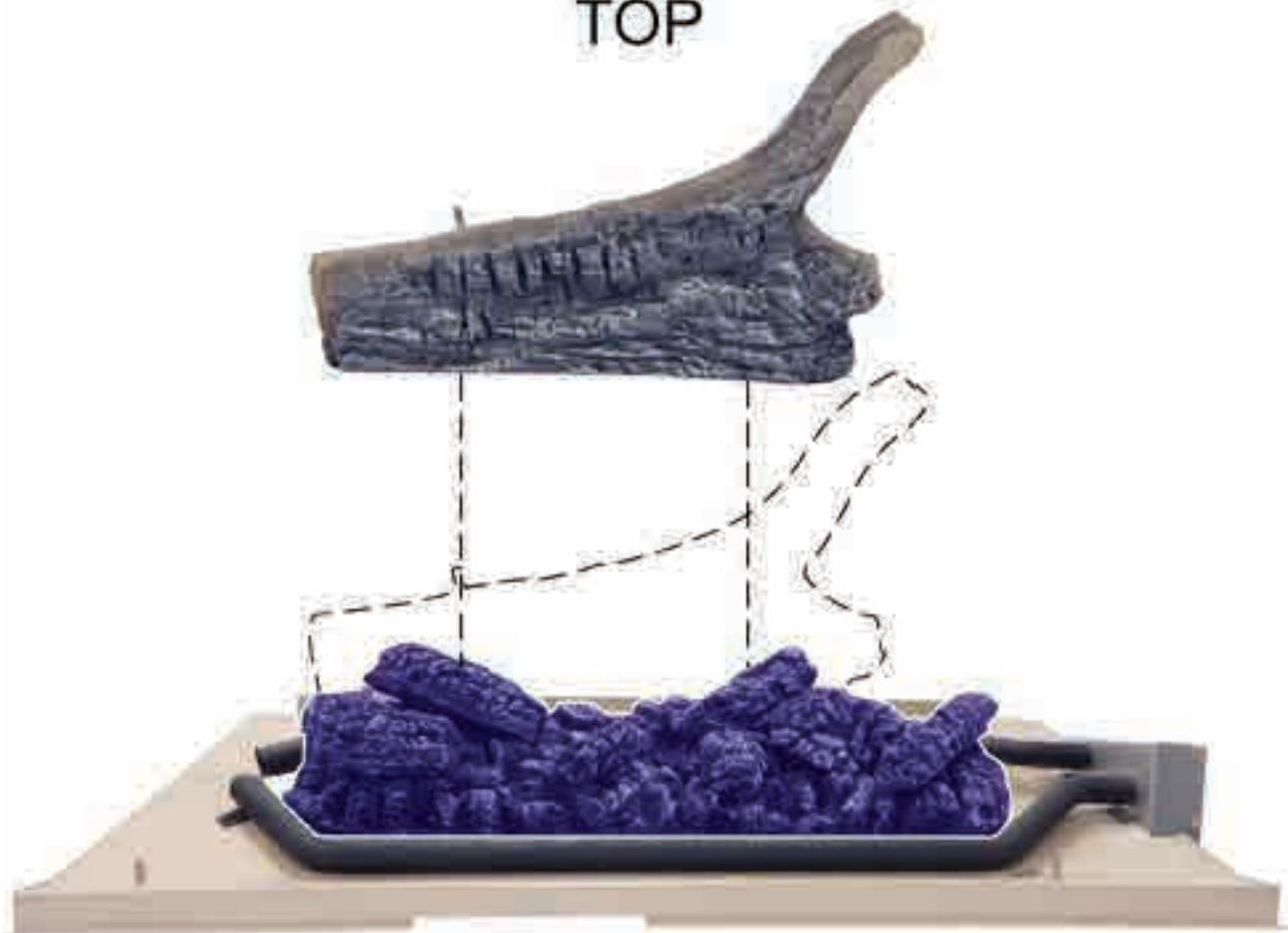
FRONT

LOG PLACEMENT

2. Place **Log (B)** onto burner **Pins 1 and 2**.



TOP



FRONT

LOG PLACEMENT

3. Place **Ember Bed (C)** on the left rear of the burner pan and next to **Log (B)**. The angle on the bottom of the ember must match up with the angle of the burner pan.



TOP



FRONT

LOG PLACEMENT

4. Place **Ember Bed (D)** under the right side of **Log (B)**. The angle on the bottom of the ember must match up with the angle of the burner pan.



TOP



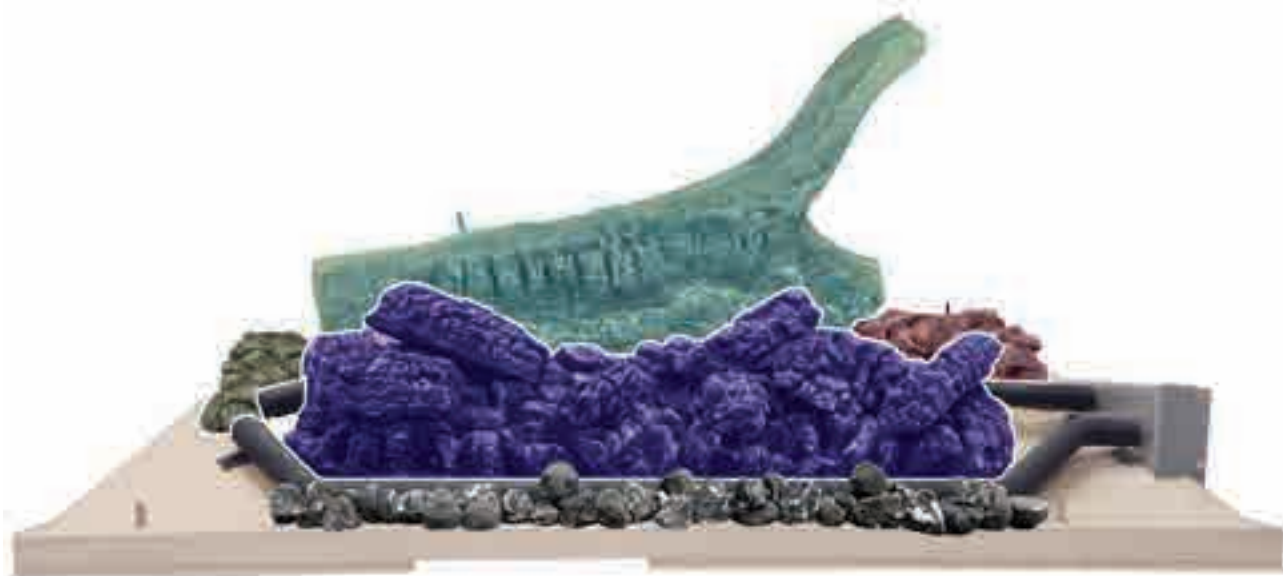
FRONT

LOG PLACEMENT

5. Place **Decorative Rocks** across burner base in front of the burner tube. Do not cover burner ports.



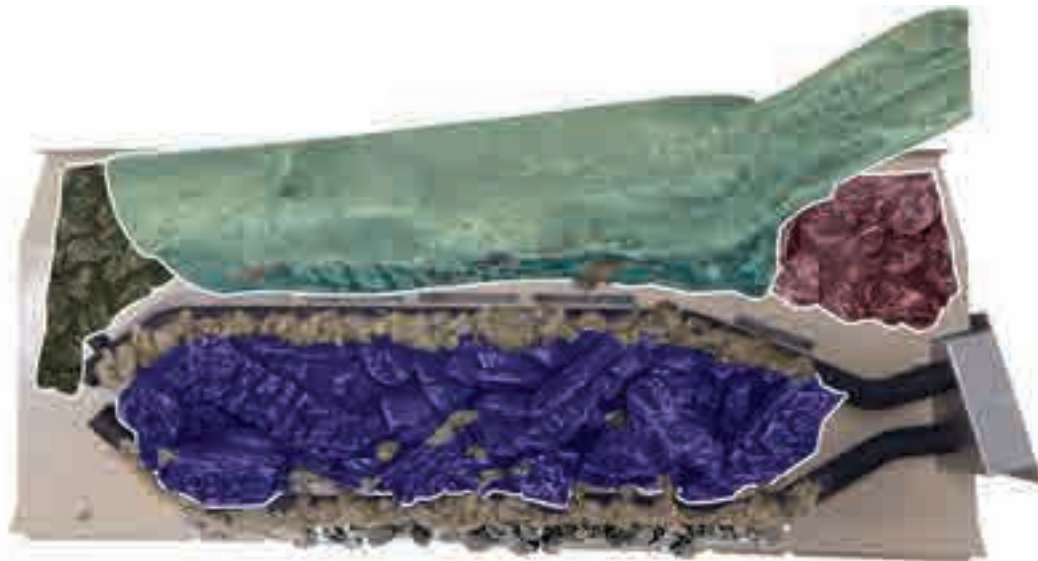
TOP



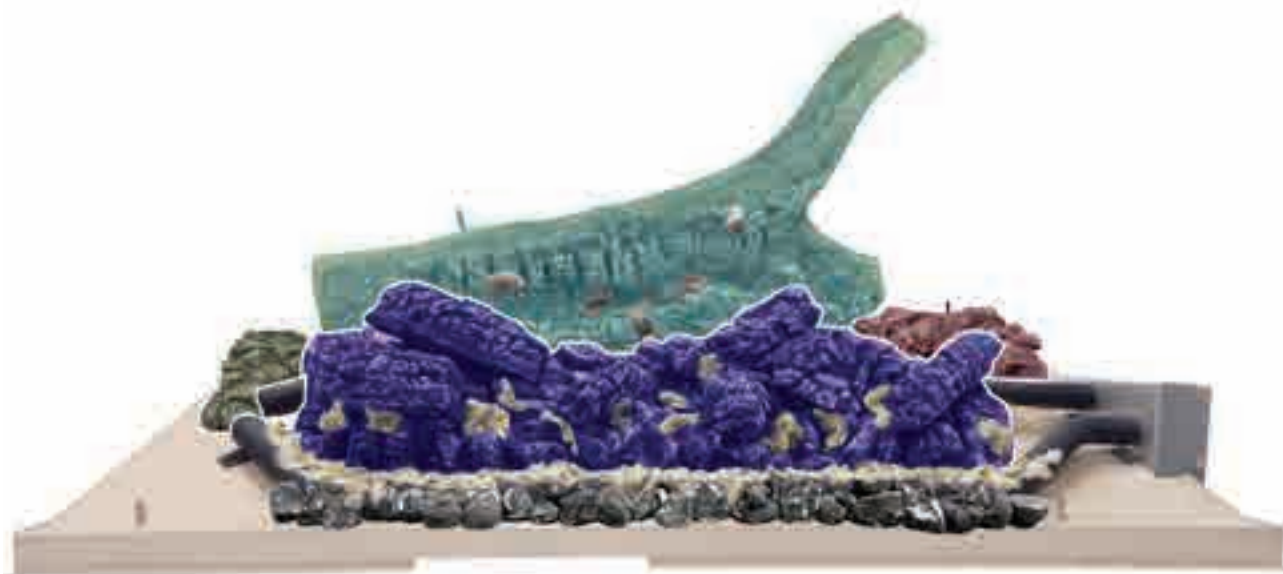
FRONT

LOG PLACEMENT

6. Place the **Glowing Embers** on the burner tubes covering all ports. Place embers on **Ember Bed (A)** as shown. You may press some embers onto the front side of **Log (B)**.



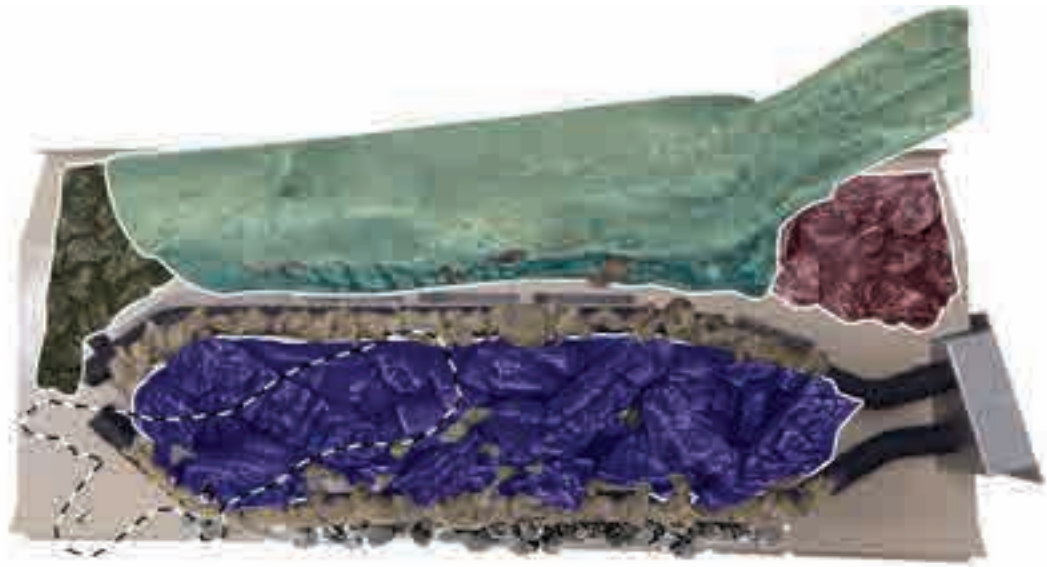
TOP



FRONT

LOG PLACEMENT

7. Place **Log (E)** onto burner **Pin 5** and the pin on **Ember Bed (A)**.



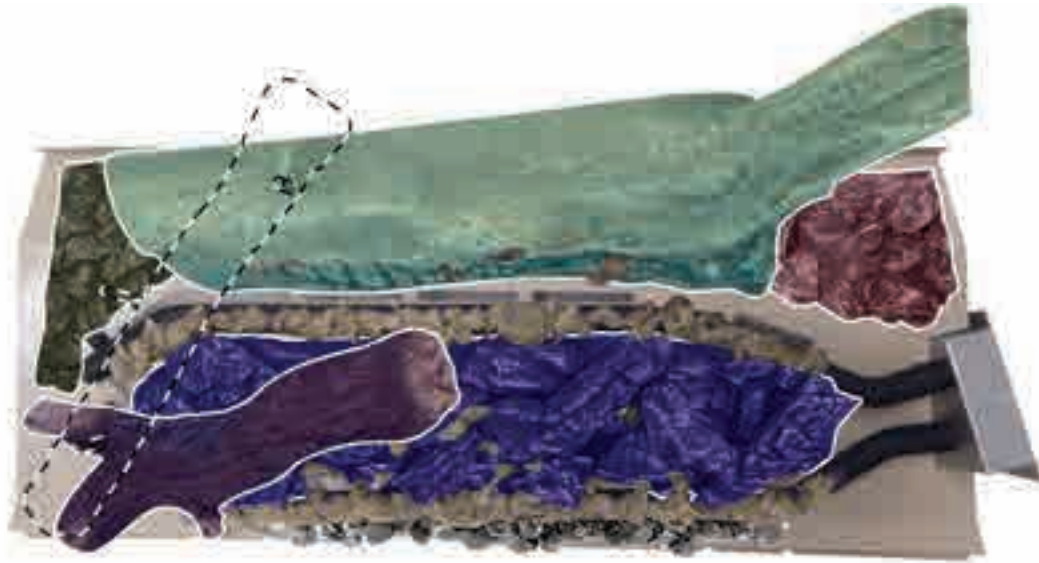
TOP



FRONT

LOG PLACEMENT

8. Place **Log (F)** onto the left pin on **Log (B)** and the pin on **Log (E)**.



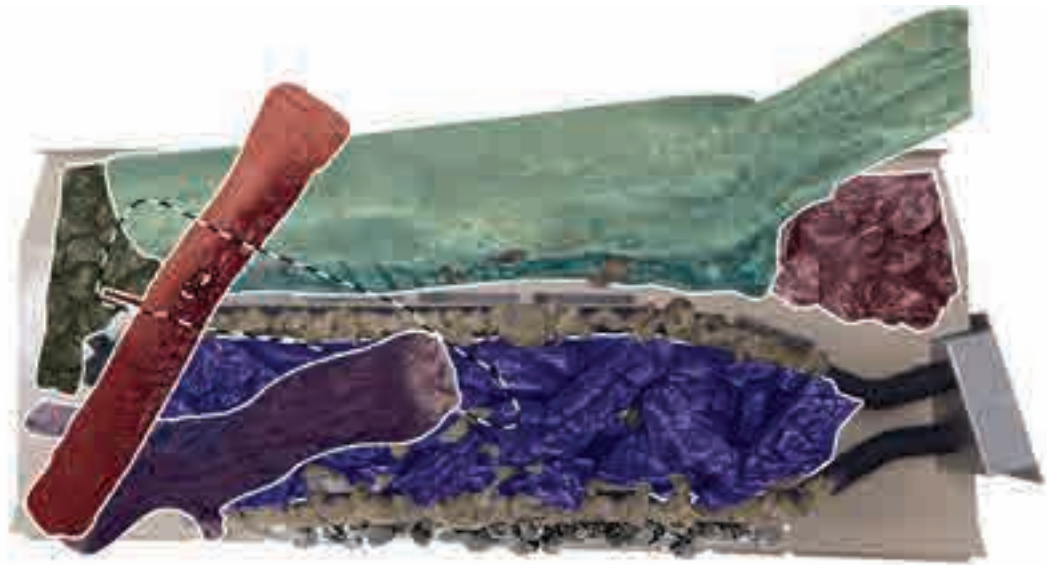
TOP



FRONT

LOG PLACEMENT

9. Place **Log (G)** onto the front pin on **Log (F)**. Carefully rotate **Log (G)** behind **Log (E)** until it rests on **Ember Bed (A)**.



TOP



FRONT

LOG PLACEMENT

10 Place **Log (H)** onto the rear pin on **Log (F)** and angle down to **Log (C)**.



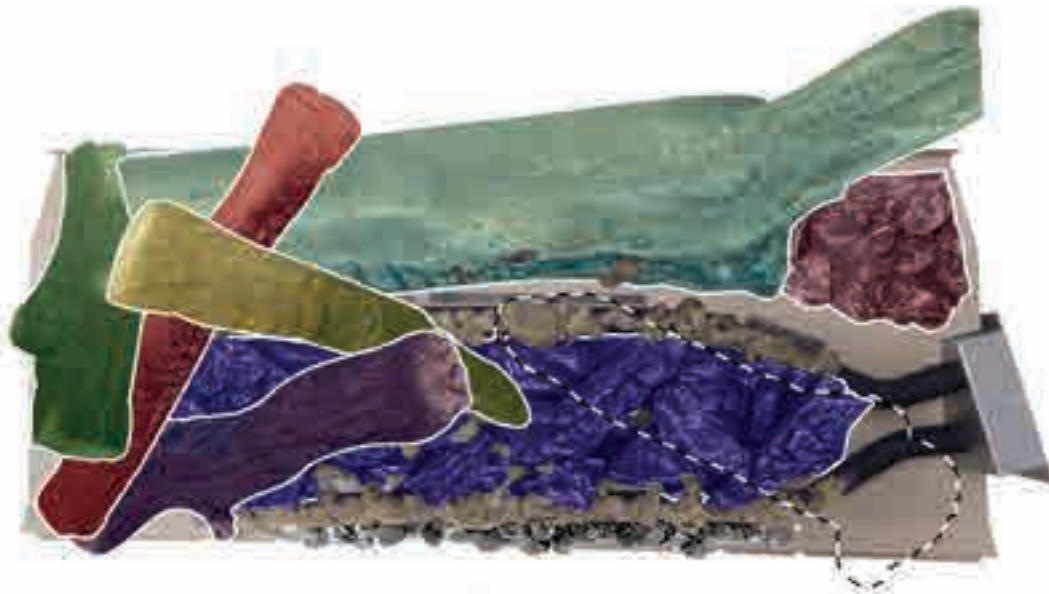
TOP



FRONT

LOG PLACEMENT

11. Place **Log (I)** onto burner **Pin 6** and onto **Ember Bed (A)**. **NOTE: Log (J)** will finalize the placement of **Log (I)**.



TOP



FRONT

LOG PLACEMENT

12. Place **Log (J)** onto the pin on **Ember Bed (D)**. Adjust **Logs (I)** and **(J)** so the pin on **Log (I)** fits into **Log (J)**.



TOP



FRONT

LOG PLACEMENT

13. Place **Log (K)** onto the pin on **Log (J)** and angle down to the right front corner of the burner.



TOP



FRONT

LOG PLACEMENT

14. Place **Log (L)** over the front burner tube and on **Ember Bed (A)**.



TOP



FRONT

LOG PLACEMENT

15. Place **Log (N)** over the front of the burner tube and on **Ember Bed (A)**.



TOP



FRONT

LOG PLACEMENT

16. Place **Log (M)** on the left front of the burner pan and under the lower portion of **Log (E)**.



TOP



FRONT

LOG PLACEMENT

17. Place additional **Decorative Rocks and Embers** in any empty areas around the burner as desired. DO NOT cover burner ports. The log set is complete.



TOP



FRONT

MASTER PARTS DISTRIBUTOR LIST

To Order Parts Under Warranty, please contact your local Empire dealer. See the dealer locator at www.empirecomfort.com. To provide warranty service, your dealer will need your name and address, purchase date and serial number, and the nature of the problem with the unit.

To Order Parts After the Warranty Period, please contact your dealer or one of the Master Parts Distributors listed below. This list changes from time to time. For the current list, please click on the Master Parts button at www.empirecomfort.com.

Please note: Master Parts Distributors are independent businesses that stock the most commonly ordered Original Equipment repair parts for Heaters, Grills, and Fireplaces manufactured by Empire Comfort Systems Inc.

Dey Distributing

1401 Willow Lake Boulevard
Vadnais Heights, MN 55101

Phone: 651-490-9191

Toll Free: 800-397-1339

Website: www.deydistributing.com

Parts: Heater, Hearth and Grills

F. W. Webb Company

200 Locust Street
Hartford, CT 06114

Phone: 860-722-2433

Toll Free: 800-243-9360

Fax: 860-293-0479

Toll Free Fax: 800-274-2004

Websites: www.fwwebb.com & www.victormfg.com

Parts: Heater, Hearth and Grills

East Coast Energy Products

10 East Route 36
West Long Branch, NJ 07764

Phone: 732-870-8809

Toll Free: 800-755-8809

Fax: 732-870-8811

Website: www.eastcoastenergy.com

Parts: Heater, Hearth and Grills

HOW TO ORDER REPAIR PARTS

Parts Not Under Warranty

Parts can be ordered through your Service Person, Dealer, or a Master Parts Distributor. See this page for the Master Parts Distributors list. For best results, the **service person or dealer** should order parts through the distributor. Parts can be shipped directly to the **service person/dealer**.

Warranty Parts

Warranty parts will need a proof of purchase and can be ordered by your Service Person or Dealer. Proof of purchase is **required** for warranty parts.

All parts listed in the Parts List have a Part Number. When ordering parts, first obtain the Model Number and Serial Number from the name plate on your equipment. Then determine the Part Number (**not** the Index Number) and the Description of each part from the following illustration and part list. Be sure to give all this information . . .

Appliance Model Number _____ Part Description _____

Appliance Serial Number _____ Part Number _____

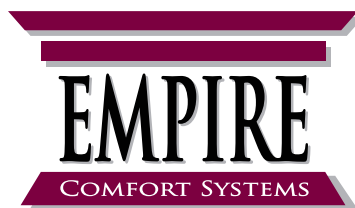
Type of Gas (Propane or Natural) _____

Do not order bolts, screws, washers or nuts. They are standard hardware items and can be purchased at any local hardware store.

Shipments contingent upon strikes, fires and all causes beyond our control.

FIREPLACE SERVICE HISTORY

[illegible]



SINCE 1932

Empire Comfort Systems Inc.
Belleville, IL

If you have a general question
about our products, please e-mail
us at info@empirecomfort.com.

If you have a service or repair
question, please contact your dealer.

www.empirecomfort.com