

INSTALLATION INSTRUCTIONS AND OWNER'S MANUAL



LPR2430-1 LOGS SHOWN ON BF(L,M,R)30

INSTALLER:

Leave this manual with the appliance.

CONSUMER:

Retain this manual for future reference.

⚠ WARNING

FIRE OR EXPLOSION HAZARD

If the information in this manual is not followed exactly, a fire or explosion may result causing property damage, personal injury or loss of life.

- Do not store or use gasoline or other flammable vapors and liquids in the vicinity of this or any other appliance.
- **WHAT TO DO IF YOU SMELL GAS**
 - Do not try to light any appliance.
 - Do not touch any electrical switch; do not use any phone in your building.
 - Leave the building immediately.
 - Immediately call your gas supplier from a neighbor's phone. Follow the gas supplier's instructions.
 - If you cannot reach your gas supplier, call the fire department.
- Installation and service must be performed by a qualified installer, service agency or the gas supplier.

PIONEER VENTED DECORATIVE GAS LOG SET

MODELS

LPR2430-1

**FOR USE ON BURNER MODEL:
BF(L,M,R)(2124,30)**

CONGRATULATIONS on the purchase of your new **DECORATIVE VENTED GAS LOG SET!**

Your Decorative Gas Log Set is designed and intended for installation in an approved, existing, fully vented, wood-burning fireplace, with a gas hook-up.

The log placement shown in this manual replicates the set-up shown in the brochure and provides a great flame pattern.

IMPORTANT! Read these instructions carefully before installing or operating this gas appliance. These instructions should be left with the homeowner for future reference.

⚠ WARNING

If not installed, operated and maintained in accordance with the manufacturer's instructions, this product could expose you to substances in fuel or from fuel combustion which can cause death or serious illness.


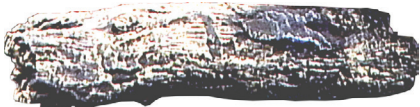

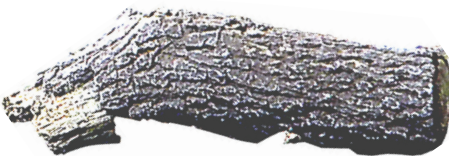








⚠ WARNING

This log set is to be installed only in a solid-fuel burning fireplace with a working flue constructed of non-combustible material. The vent damper must also have a damper clamp attached to it to keep the damper from accidentally closing during operation.

LPR2430 ON BF(L,M,R)2124



LPR2430-1 LOG IDENTIFICATION - BF(L,M,R)(2124,30)

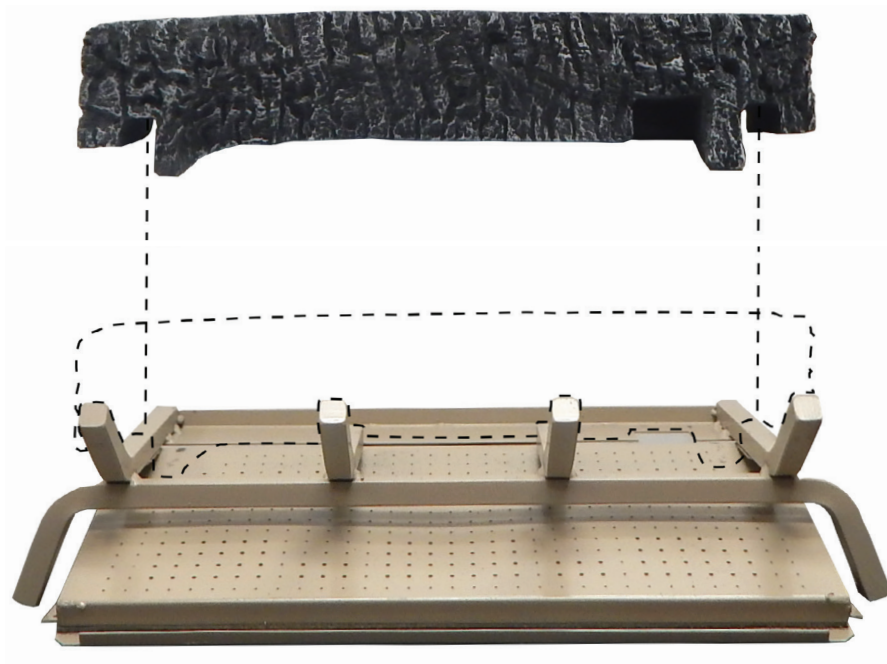
DESCRIPTION	FRONT VIEW - BF(L,M,R)(2124,30)	DESCRIPTION	FRONT VIEW - BF(L,M,R)(2124,30)
(Log A)		(Log I)	
(Log B)		(Log J)	
(Log C)		(Log K)	
(Log D)		DESCRIPTION	FRONT VIEW - BF(L,M,R)30
(Log E)		(Log L)	
(Log F)		NOTE: Logs are not shown to scale. NOTE: Logs may differ from those shown.	
(Log G)			
(Log H)			

LPR2430-1 LOG PLACEMENT ON BF(L,M,R)2124

1. Place **Fiber Heat Sink** (included with burner) onto top rear log support.



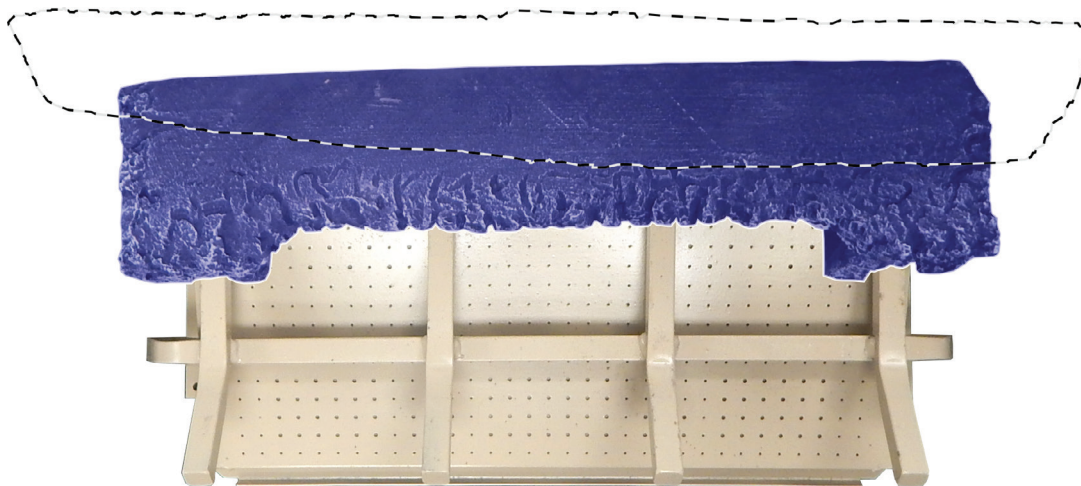
TOP VIEW



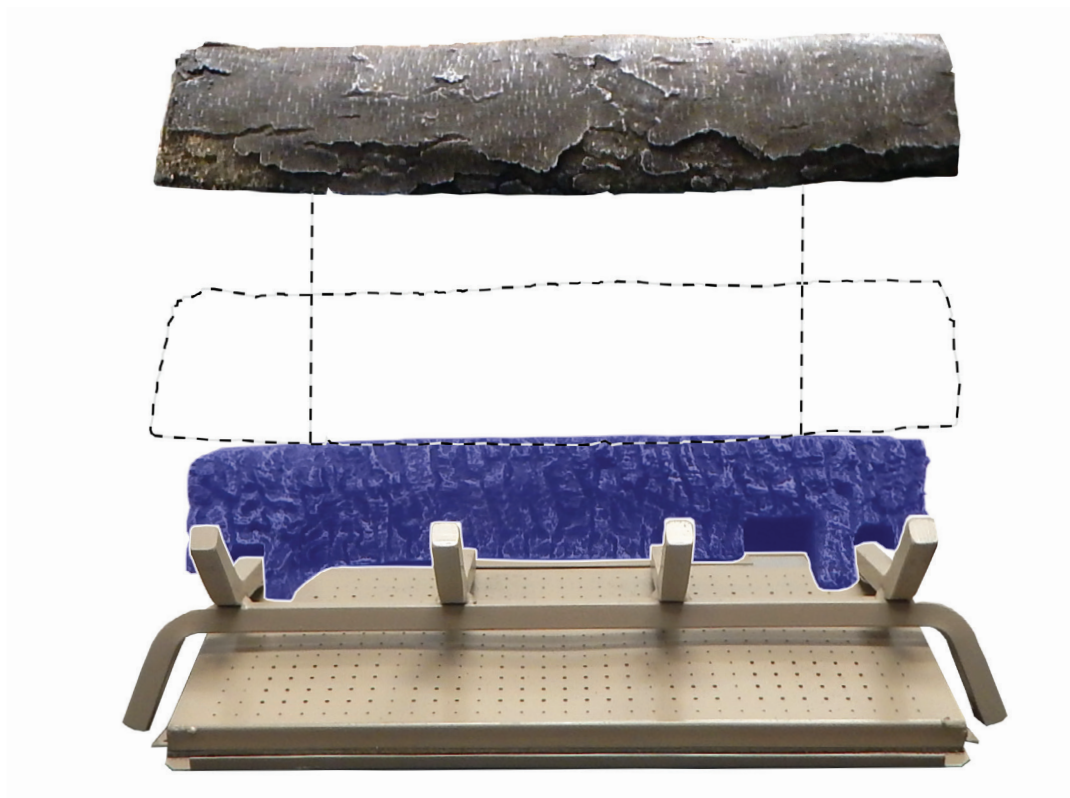
FRONT VIEW

LPR2430-1 LOG PLACEMENT ON BF(L,M,R)2124

2. Place **Log (A)** onto top of **Fiber Heat Sink**.



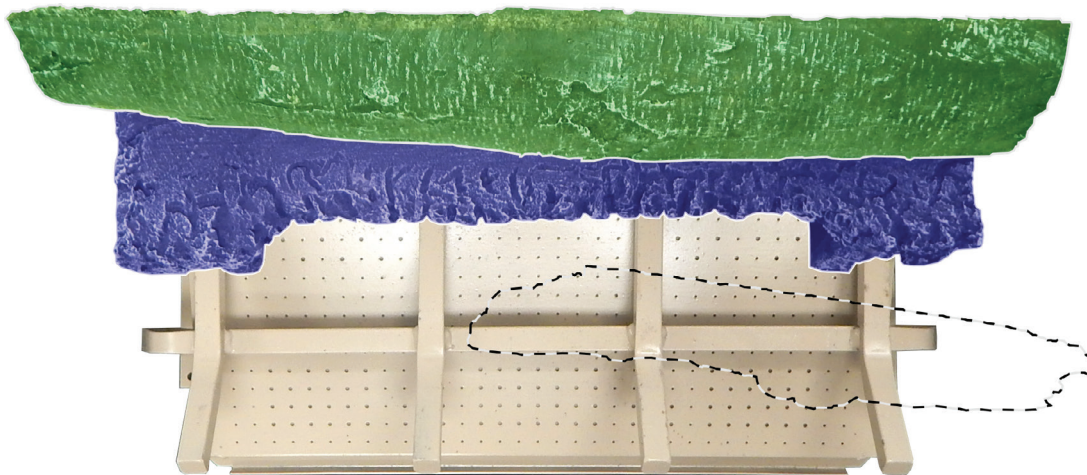
TOP VIEW



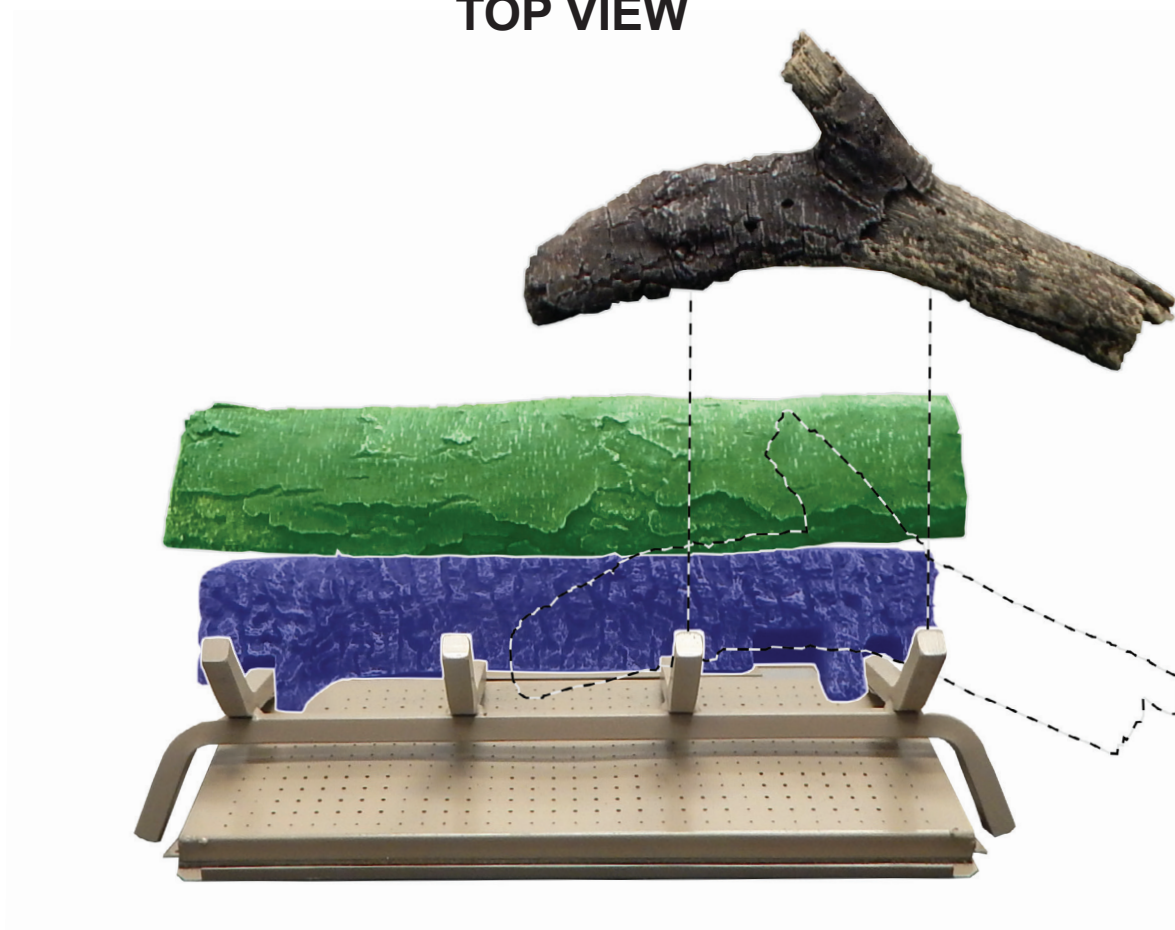
FRONT VIEW

LPR2430-1 LOG PLACEMENT ON BF(L,M,R)2124

3. Place **Log (B)** onto front right side of **Fiber Heat Sink** and against top right side of burner pan.



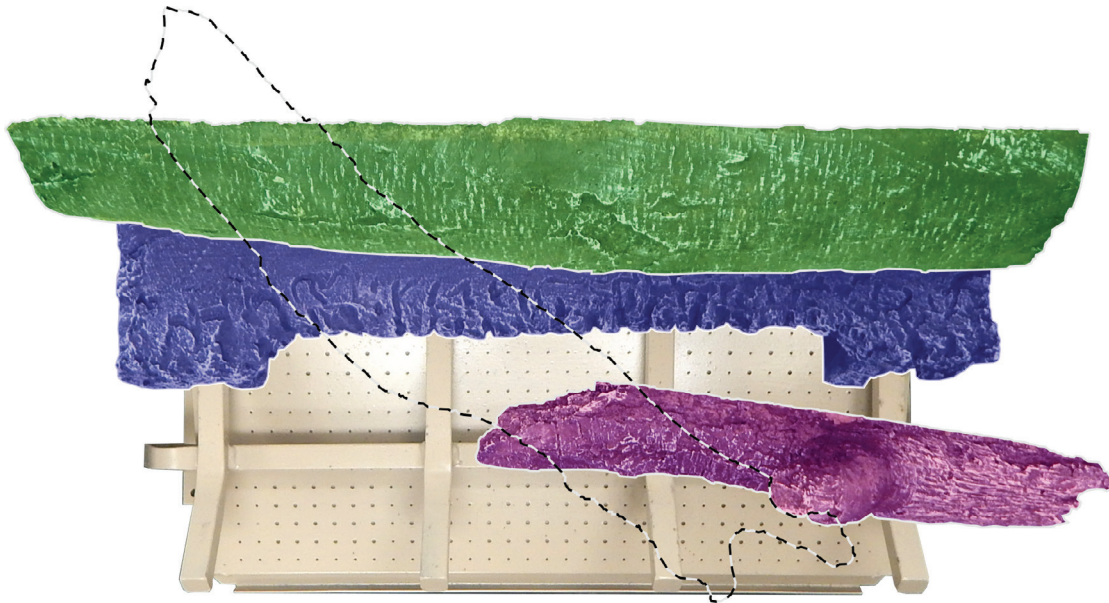
TOP VIEW



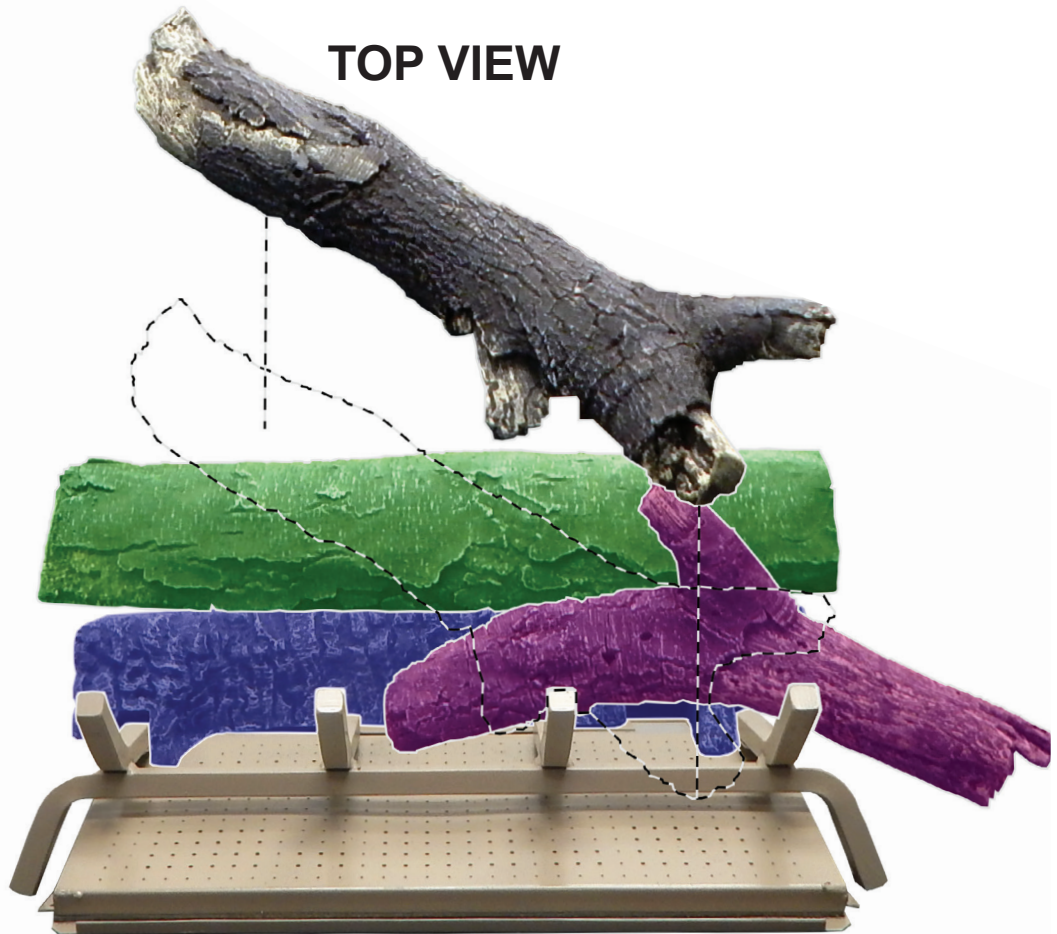
FRONT VIEW

LPR2430-1 LOG PLACEMENT ON BF(L,M,R)2124

4. Place **Log (C)** onto top left side of **Log (A)** and against top left side of **Log (B)**.



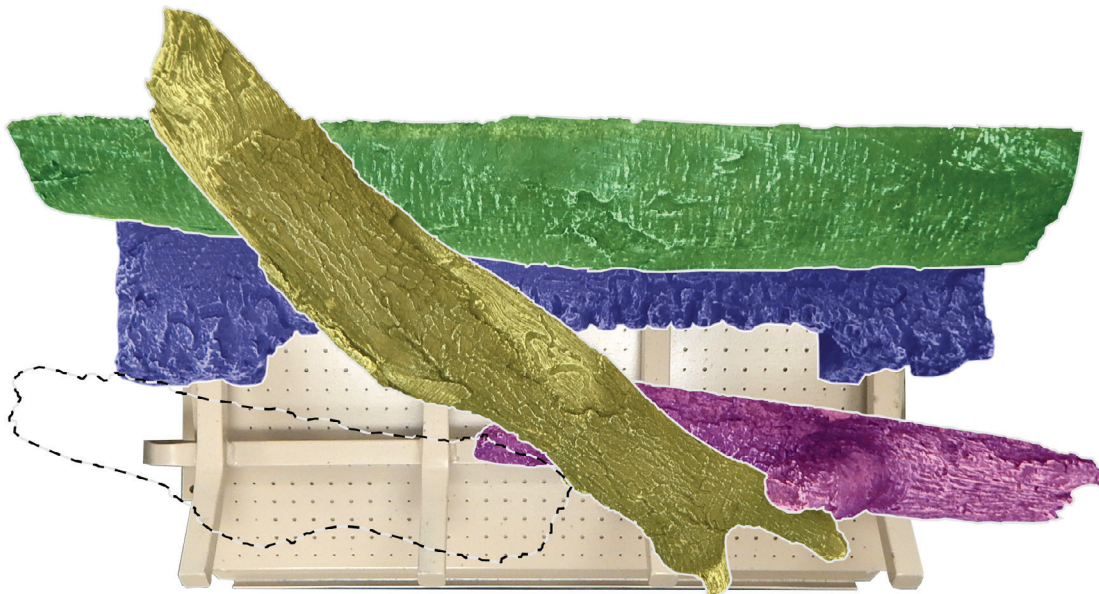
TOP VIEW



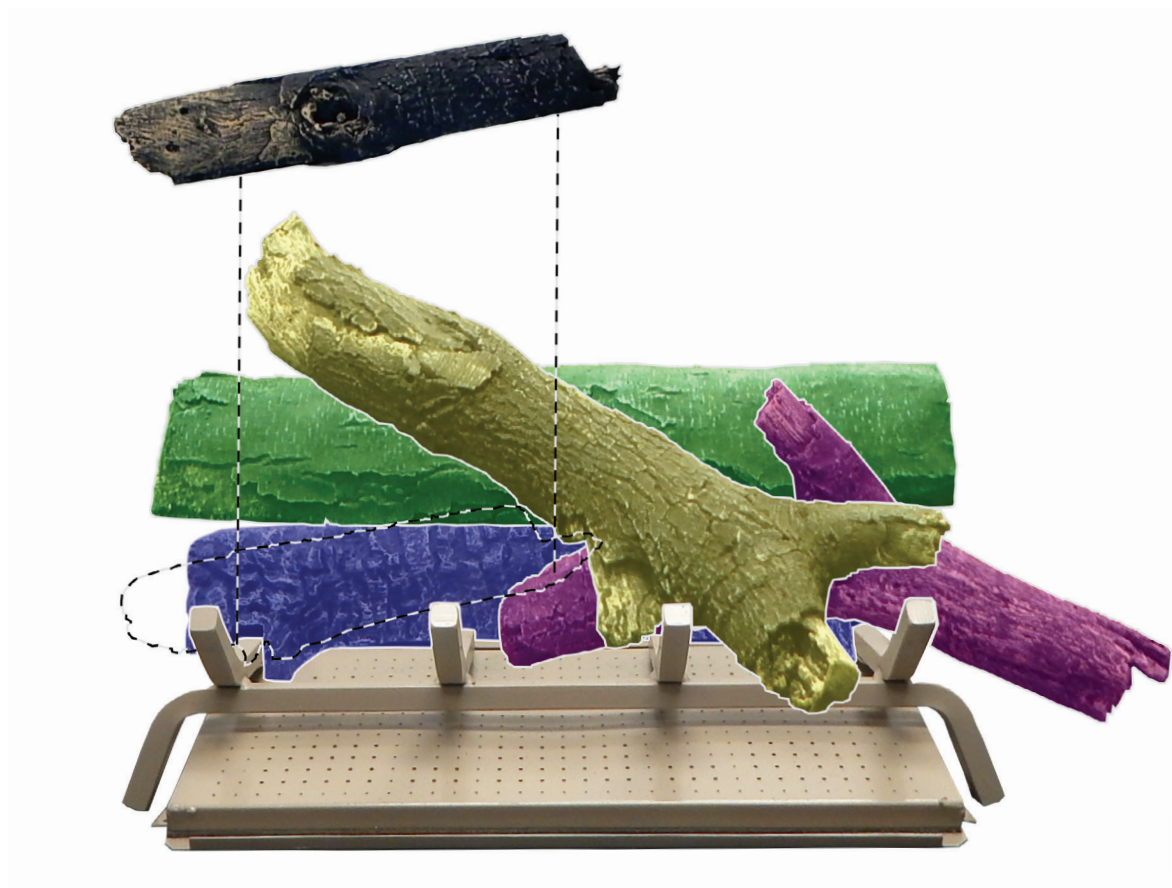
FRONT VIEW

LPR2430-1 LOG PLACEMENT ON BF(L,M,R)2124

5. Place **Log (D)** onto top left side of burner pan, and left side of **Log (B)**.



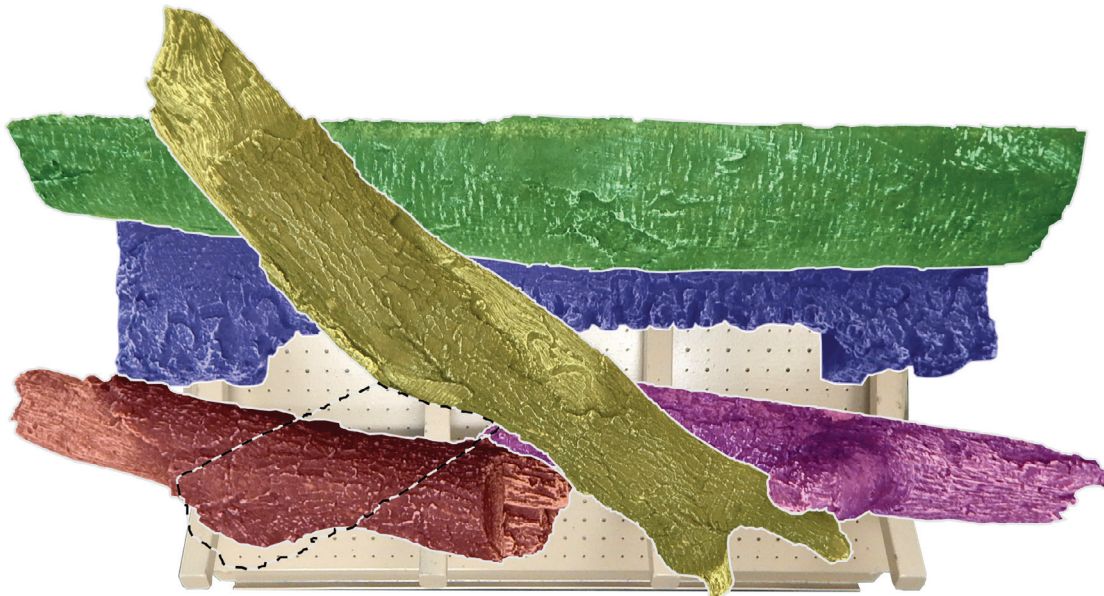
TOP VIEW



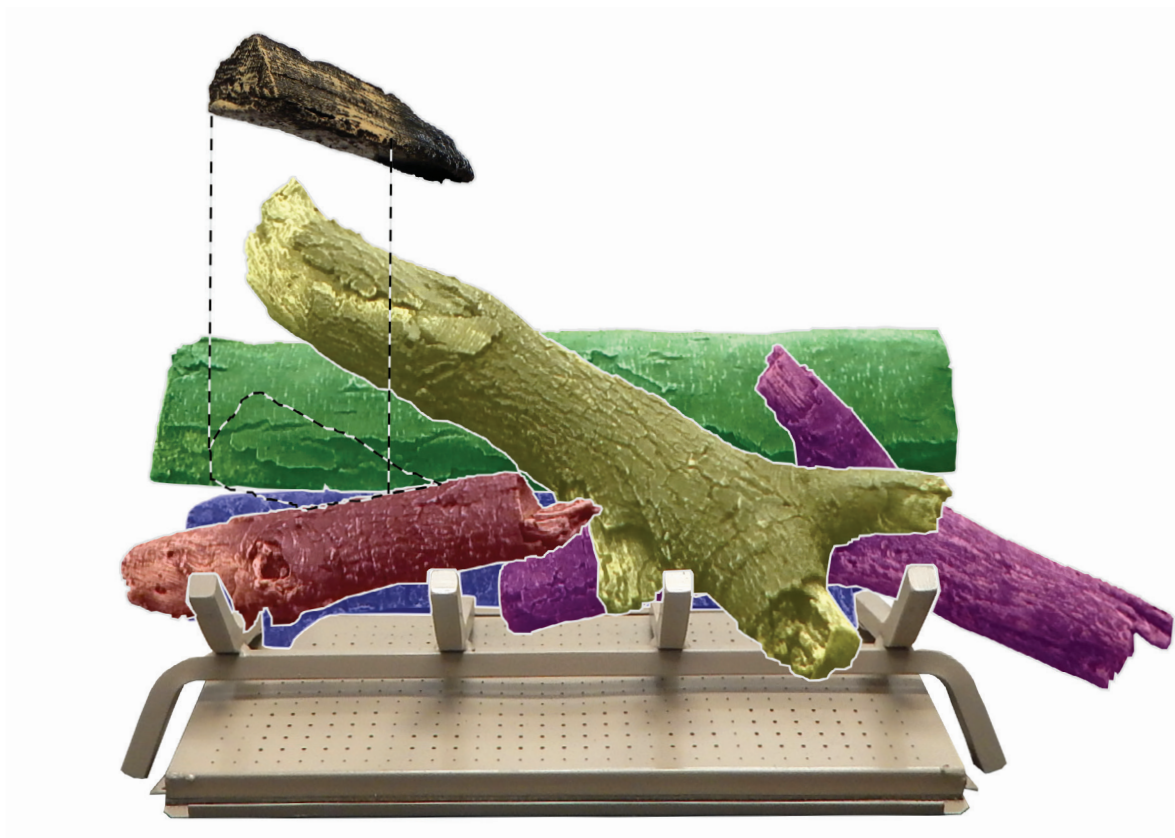
FRONT VIEW

LPR2430-1 LOG PLACEMENT ON BF(L,M,R)2124

6. Place **Log (E)** onto top side of **Log (D)**, and against left end of burner pan.



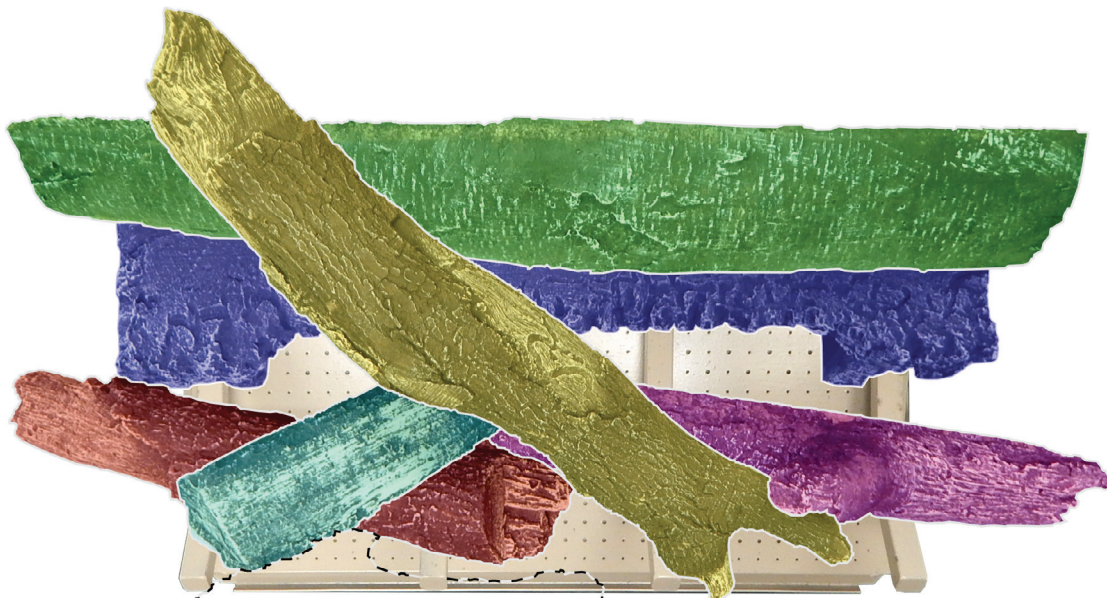
TOP VIEW



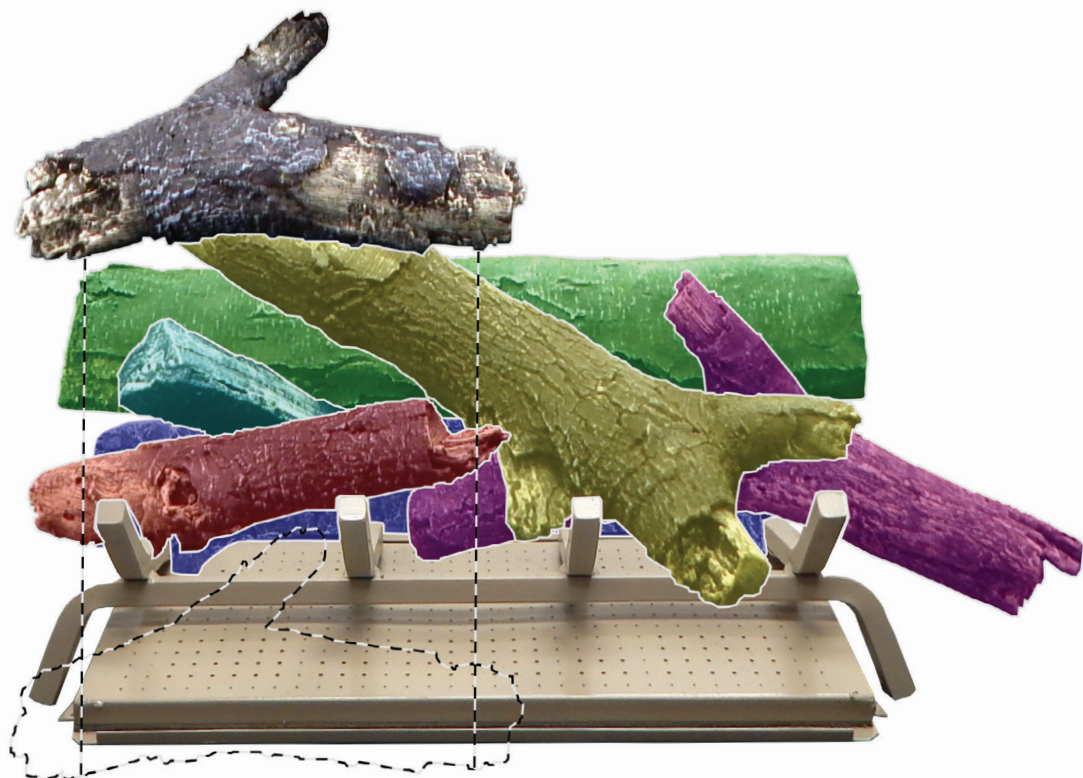
FRONT VIEW

LPR2430-1 LOG PLACEMENT ON BF(L,M,R)2124

7. Place **Log (F)** onto front right side of **Log (D)** and against front left side of burner pan.



TOP VIEW



FRONT VIEW

LPR2430-1 LOG PLACEMENT ON BF(L,M,R)2124

8. Place **Log (G)** against front right side of burner pan.



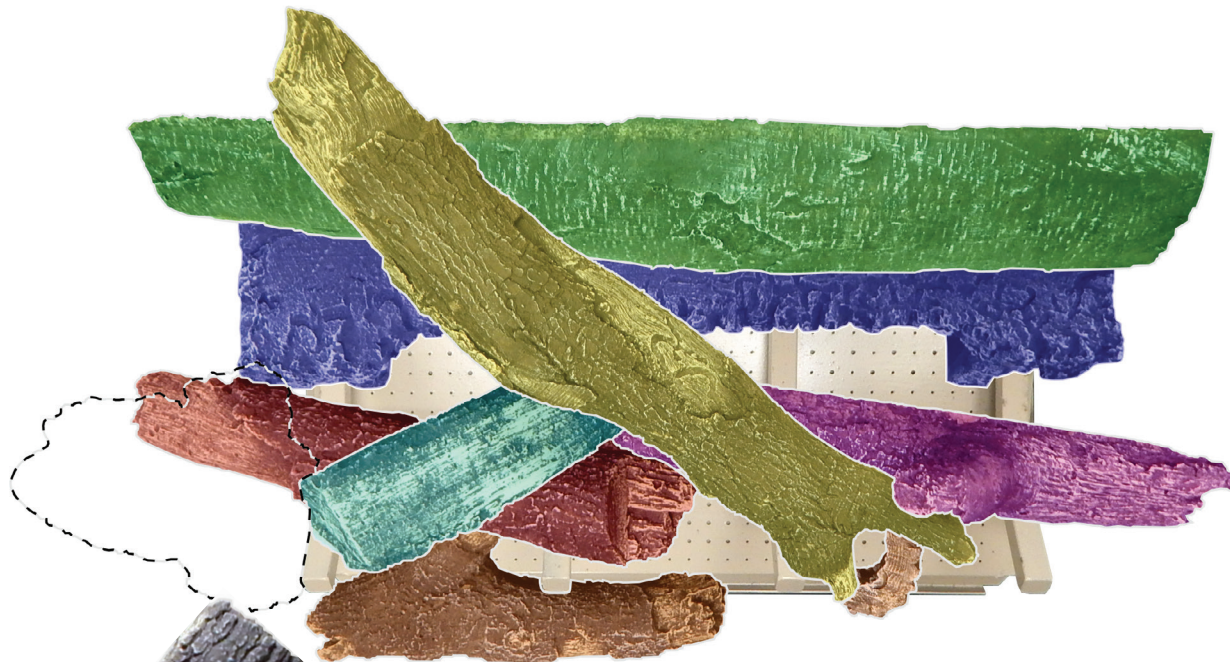
TOP VIEW



FRONT VIEW

LPR2430-1 LOG PLACEMENT ON BF(L,M,R)2124

9. Place **Log (H)** onto the top left end of **Log (A)** and against the front left side of burner pan.



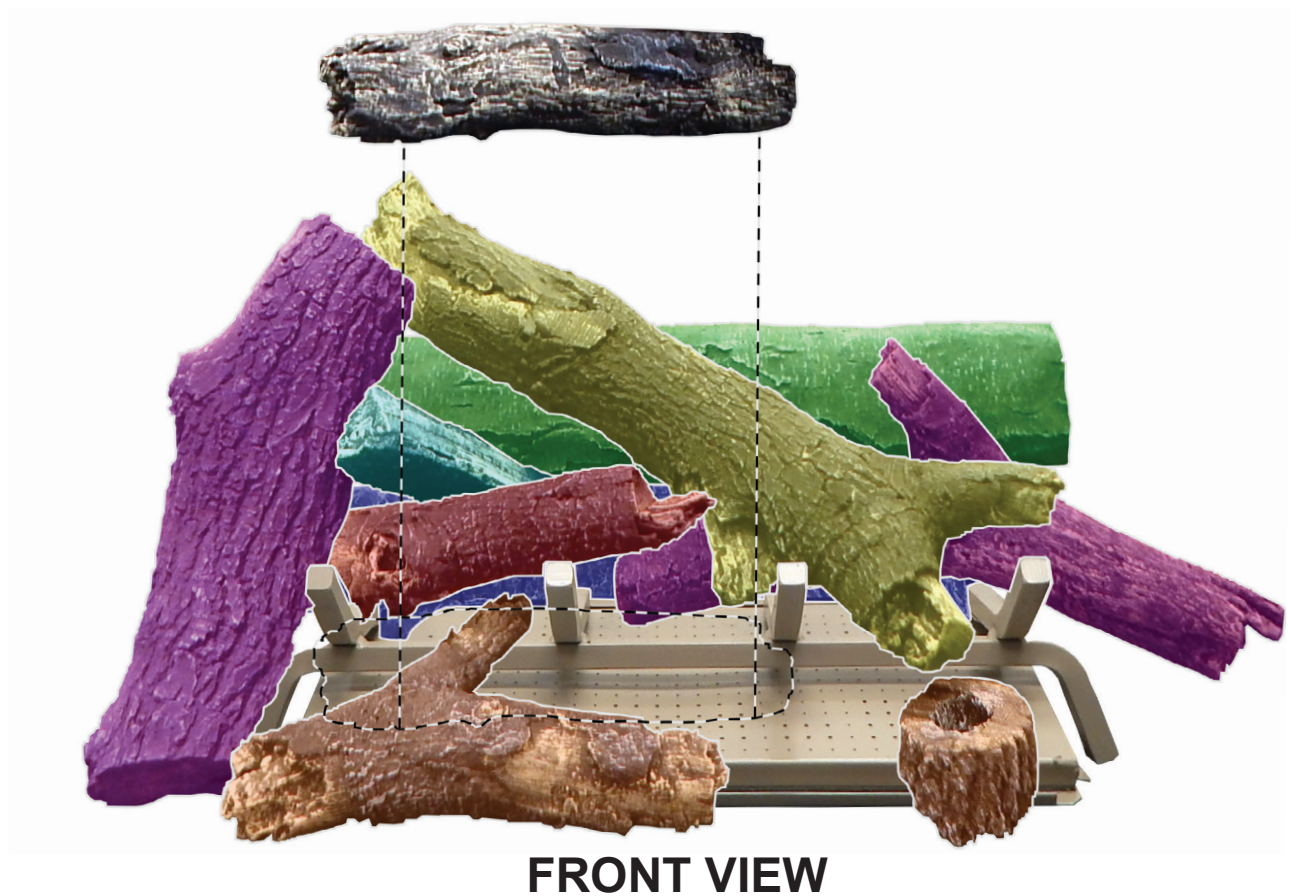
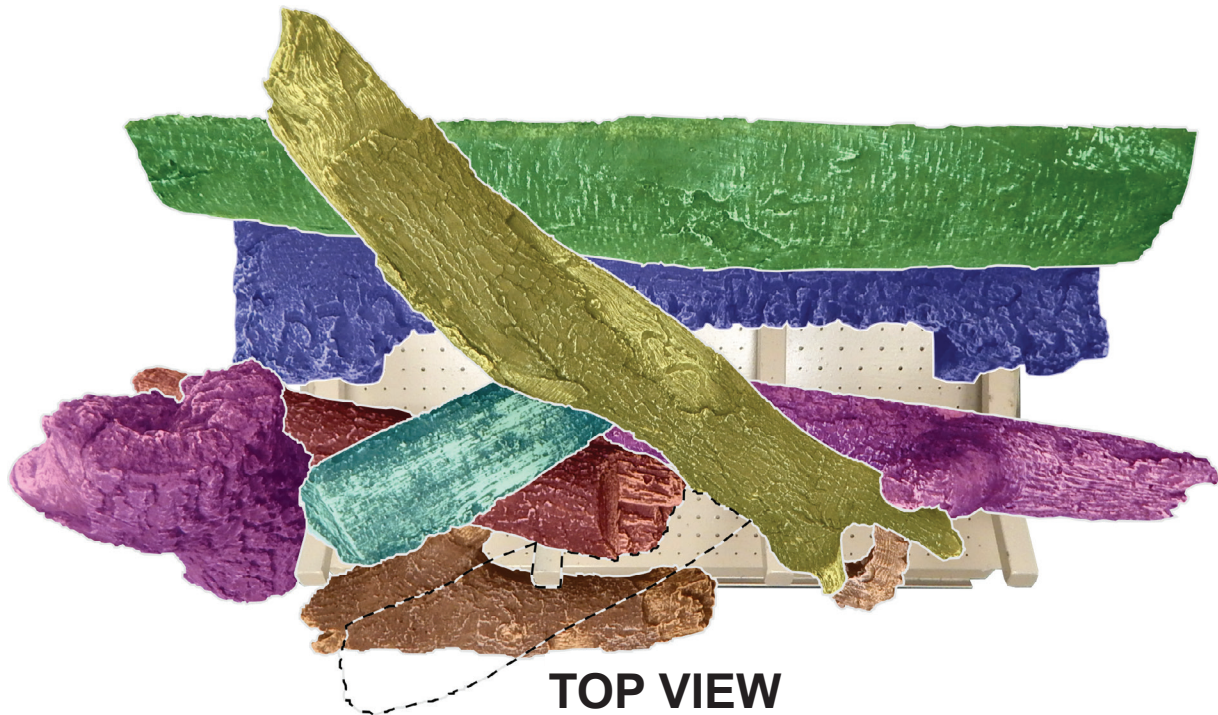
TOP VIEW



FRONT VIEW

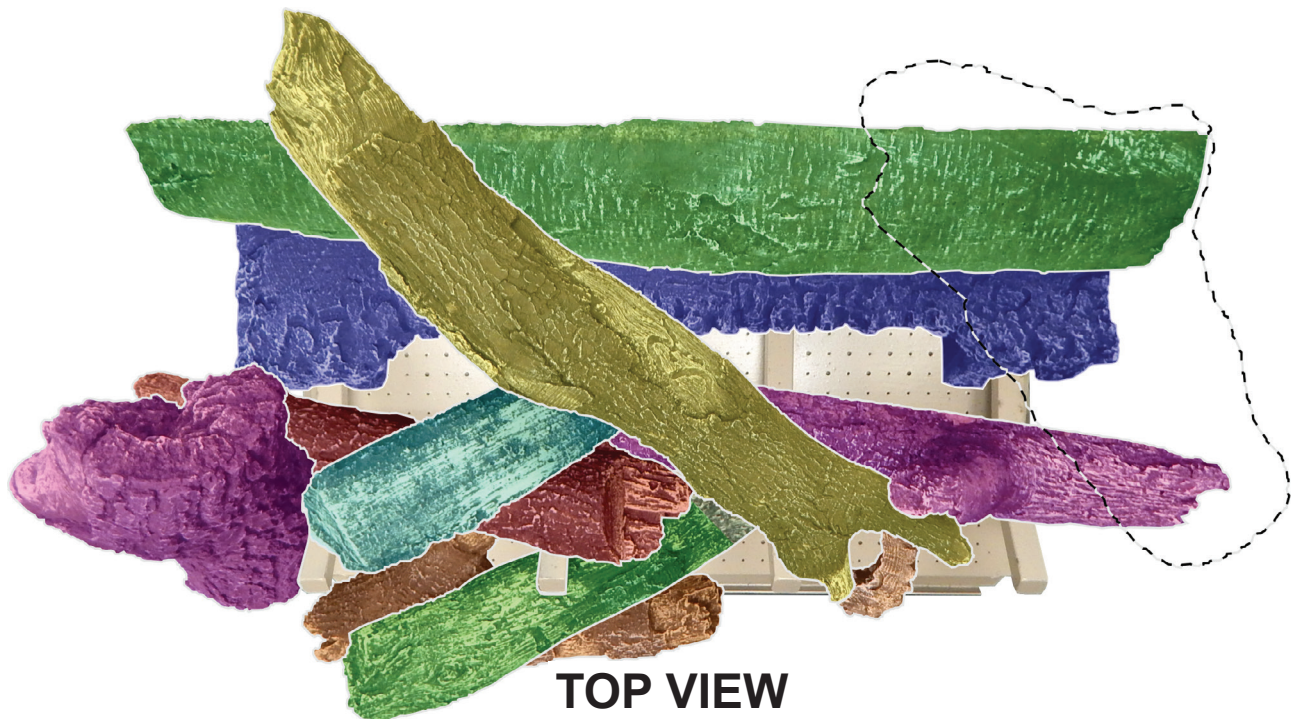
LPR2430-1 LOG PLACEMENT ON BF(L,M,R)2124

10. Place **Log (I)** onto top of **Log (F)** and against front center of burner pan.



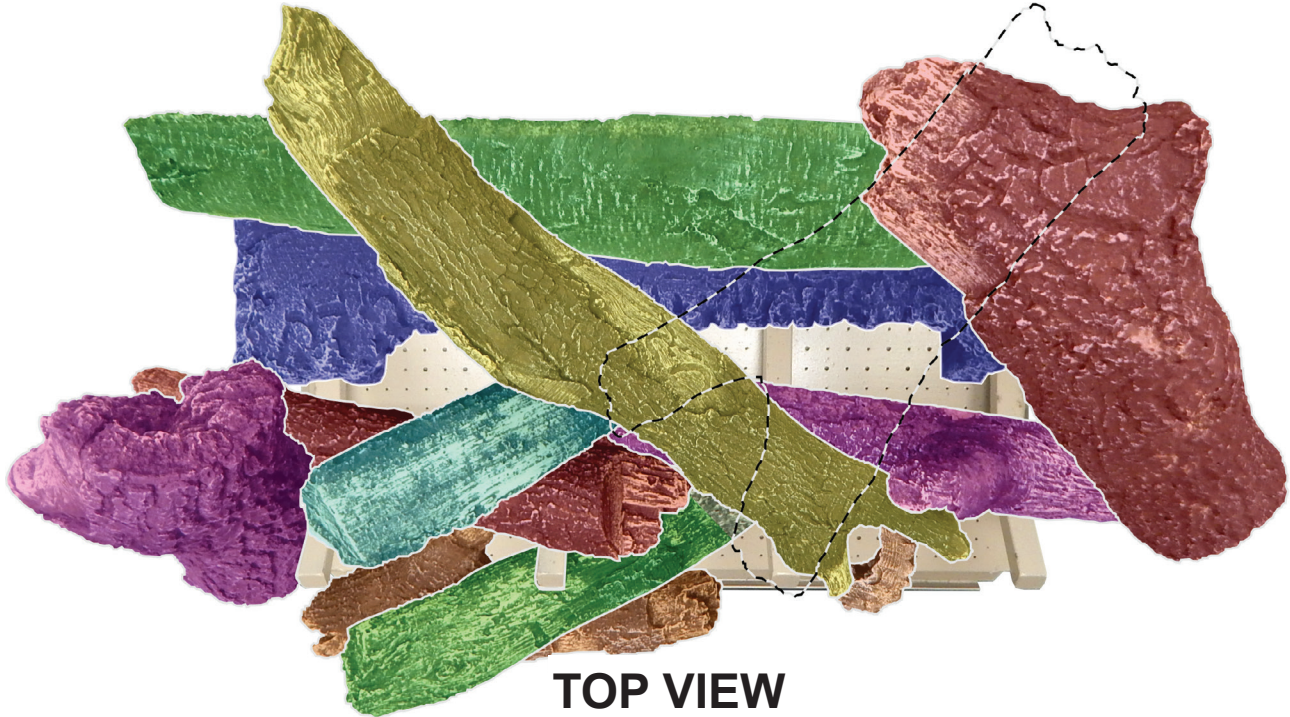
LPR2430-1 LOG PLACEMENT ON BF(L,M,R)2124

11. Place **Log (J)** onto top right end of **Log (A)**, and against top right end of **Log (B)**.



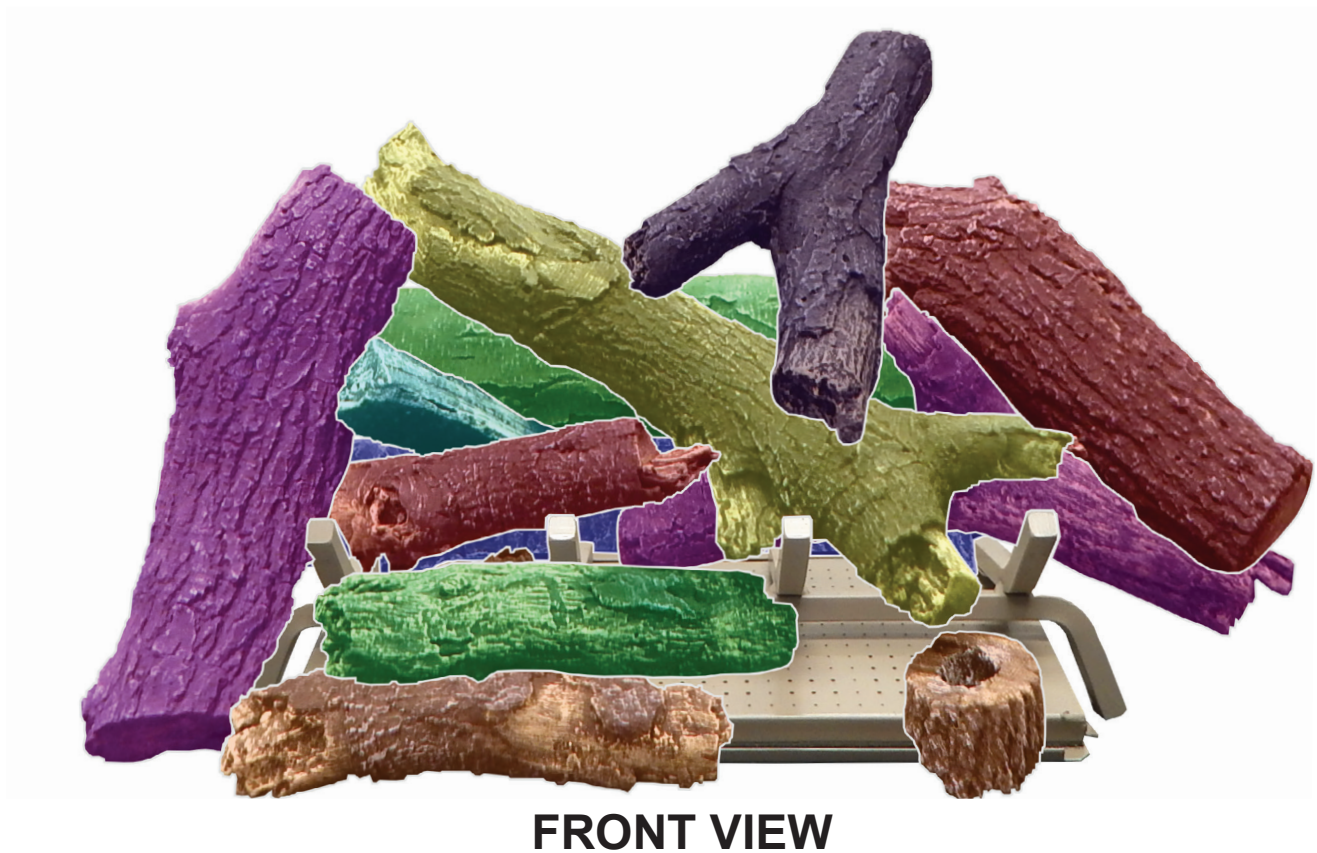
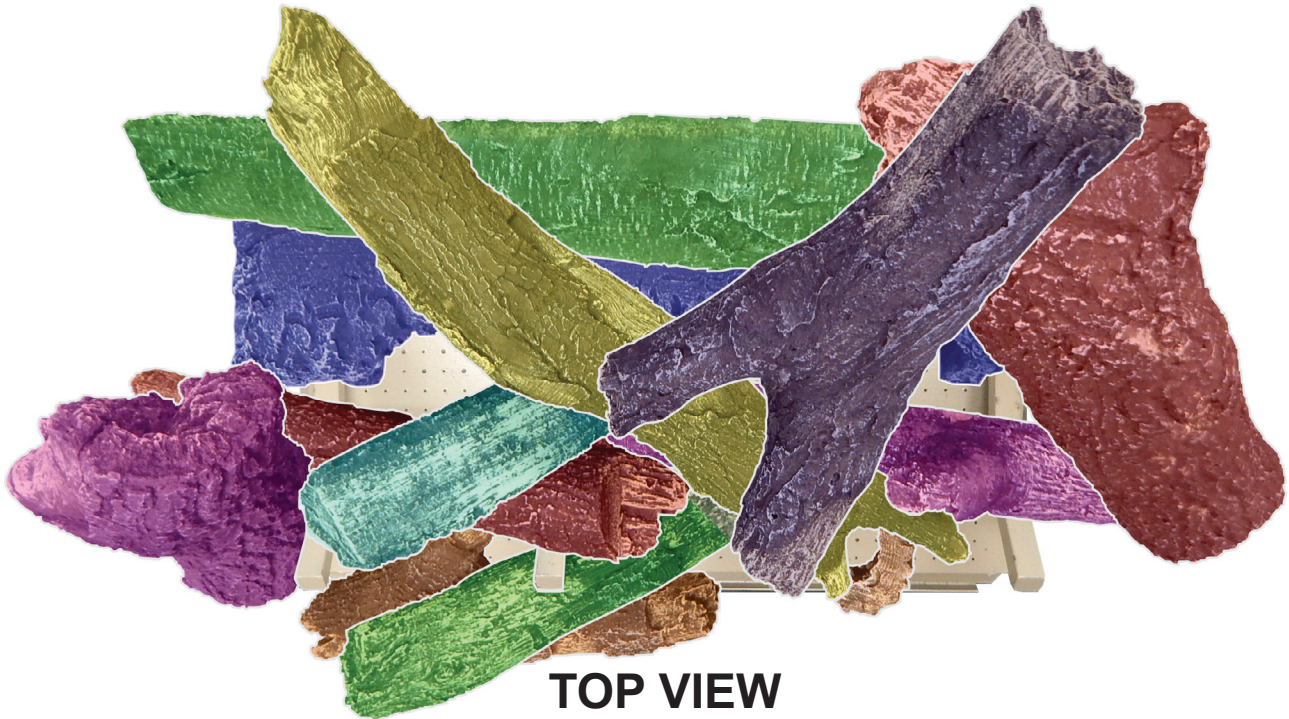
LPR2430-1 LOG PLACEMENT ON BF(L,M,R)2124

12. Place **Log (K)** onto the top of **Log (C)** and against the top left side of **Log (J)**.



LPR2430-1 LOG PLACEMENT ON BF(L,M,R)24

13. Log placement is complete.

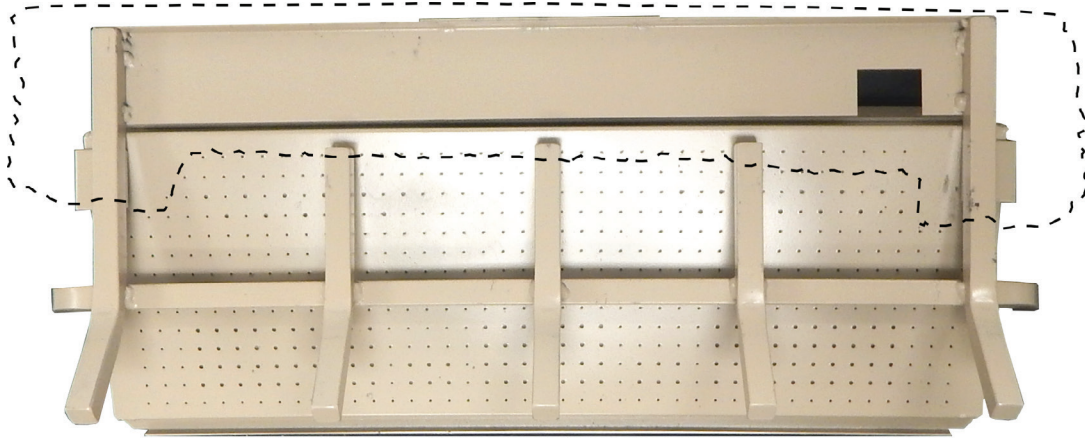


LPR2430-1 LOG PLACEMENT ON BF(L,M,R)30

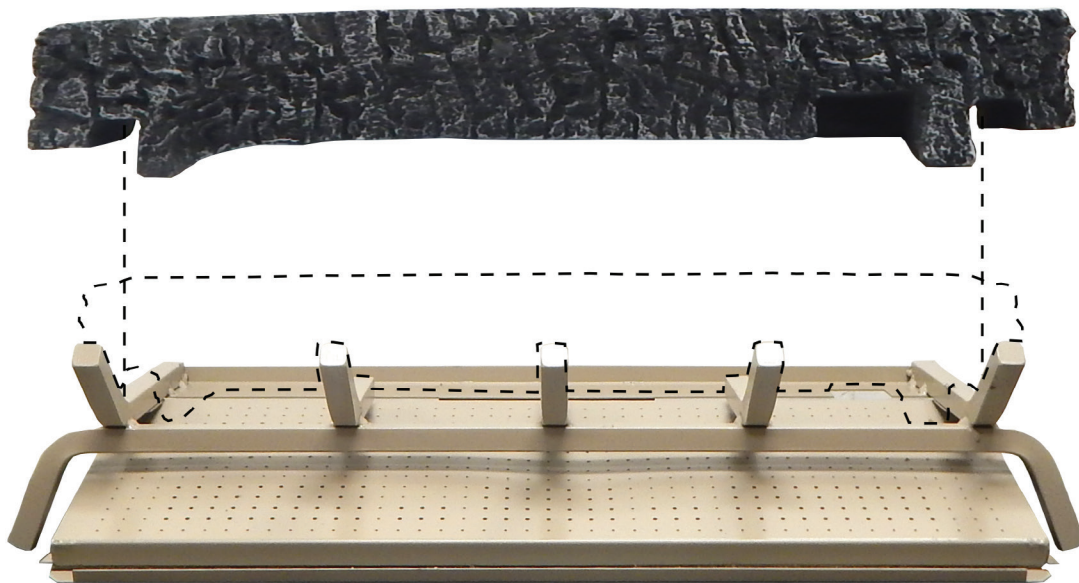


LPR2430-1 LOG PLACEMENT ON BF(L,M,R)30

1. Place **Fiber Heat Sink** (included with burner) onto top rear log support.



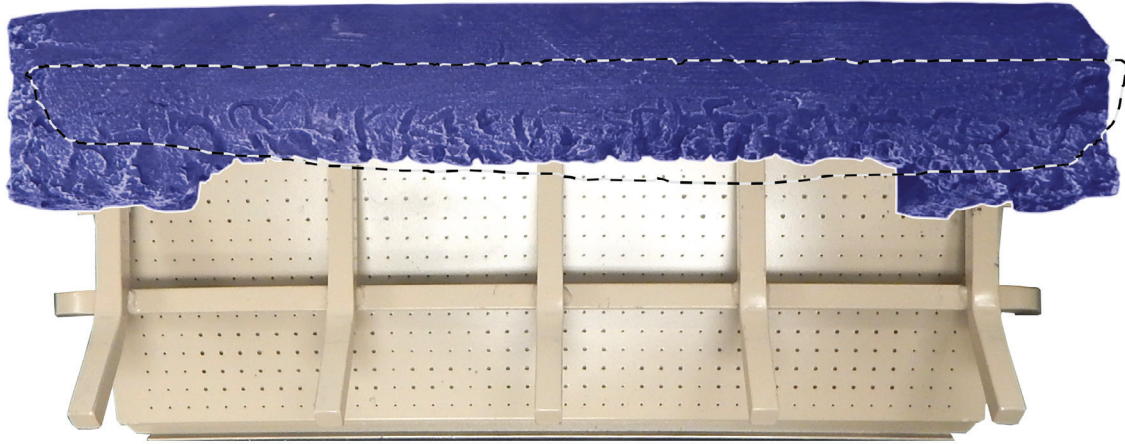
TOP VIEW



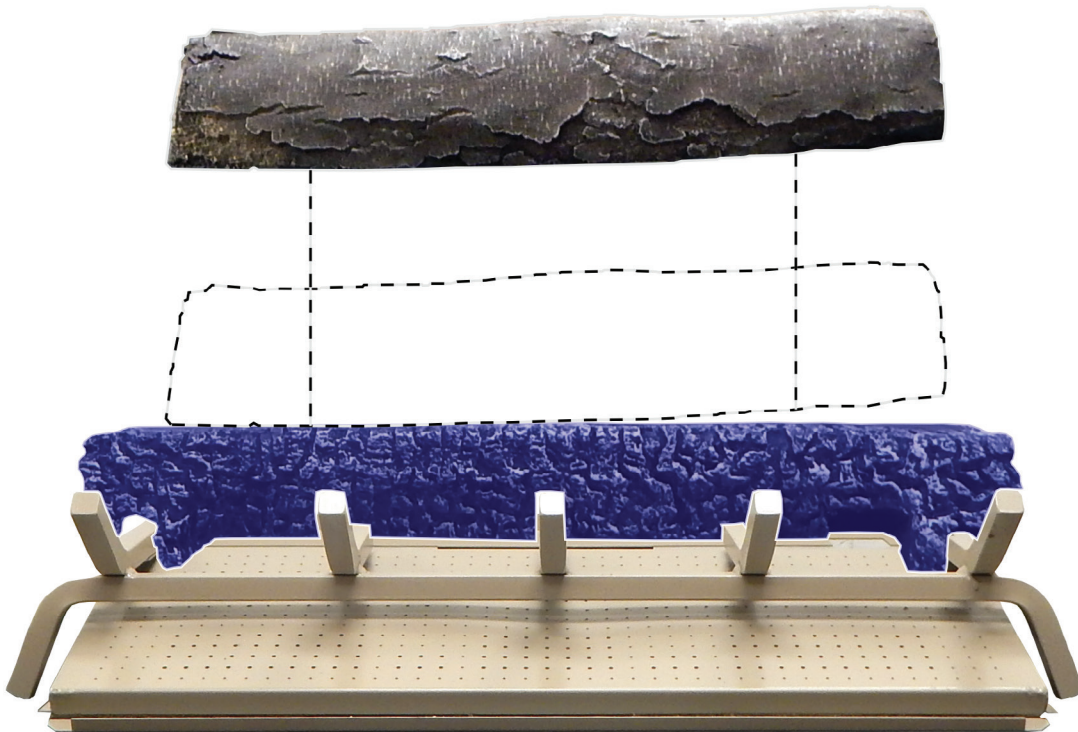
FRONT VIEW

LPR2430-1 LOG PLACEMENT ON BF(L,M,R)30

2. Place **Log (A)** onto top of **Fiber Heat Sink**.



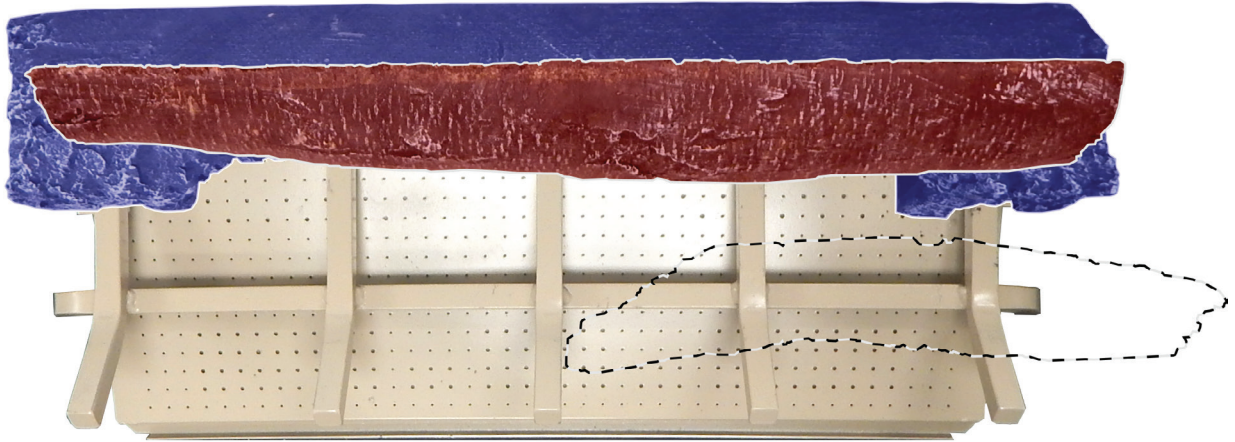
TOP VIEW



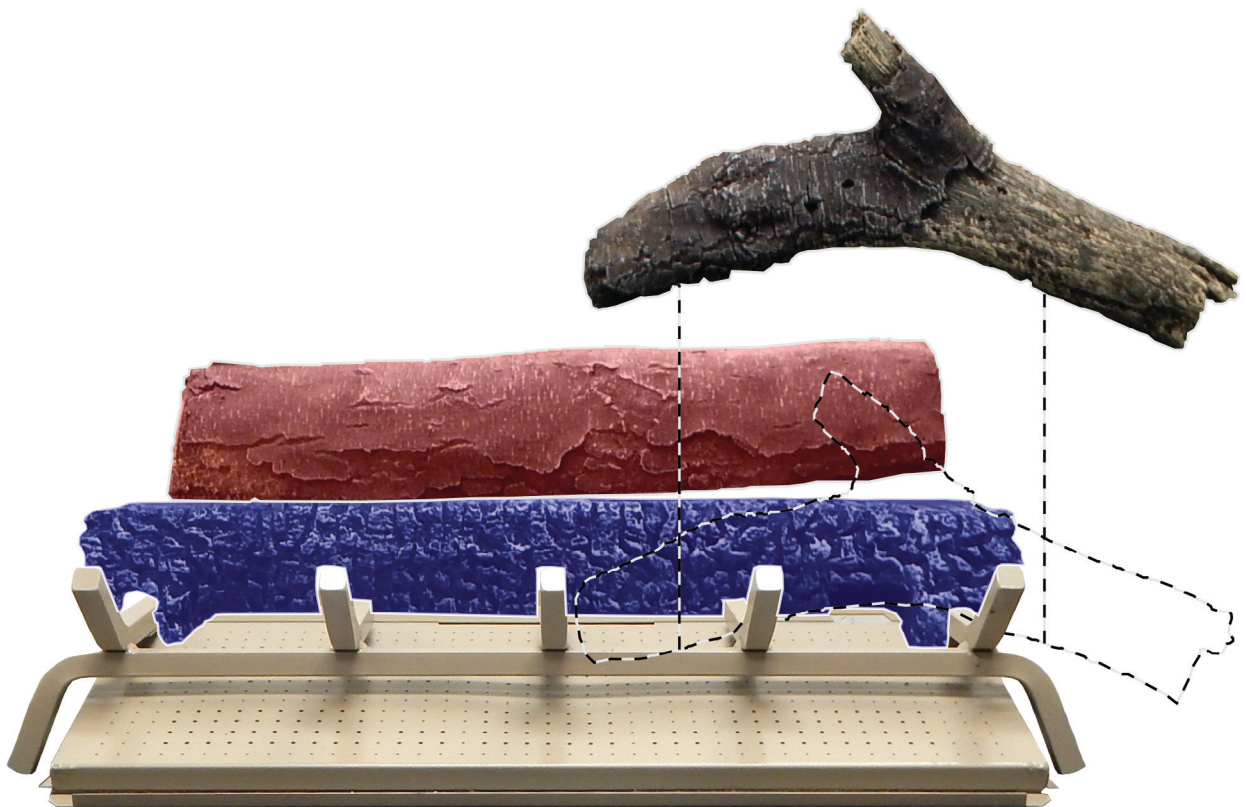
FRONT VIEW

LPR2430-1 LOG PLACEMENT ON BF(L,M,R)30

3. Place **Log (B)** onto front right side of **Fiber Heat Sink** and against top right end of burner pan.



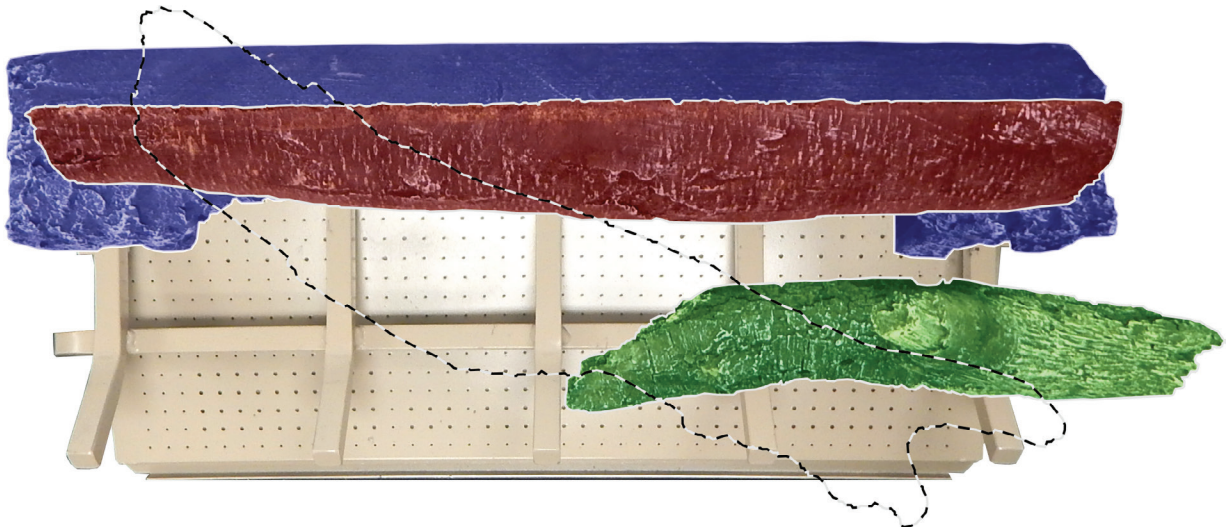
TOP VIEW



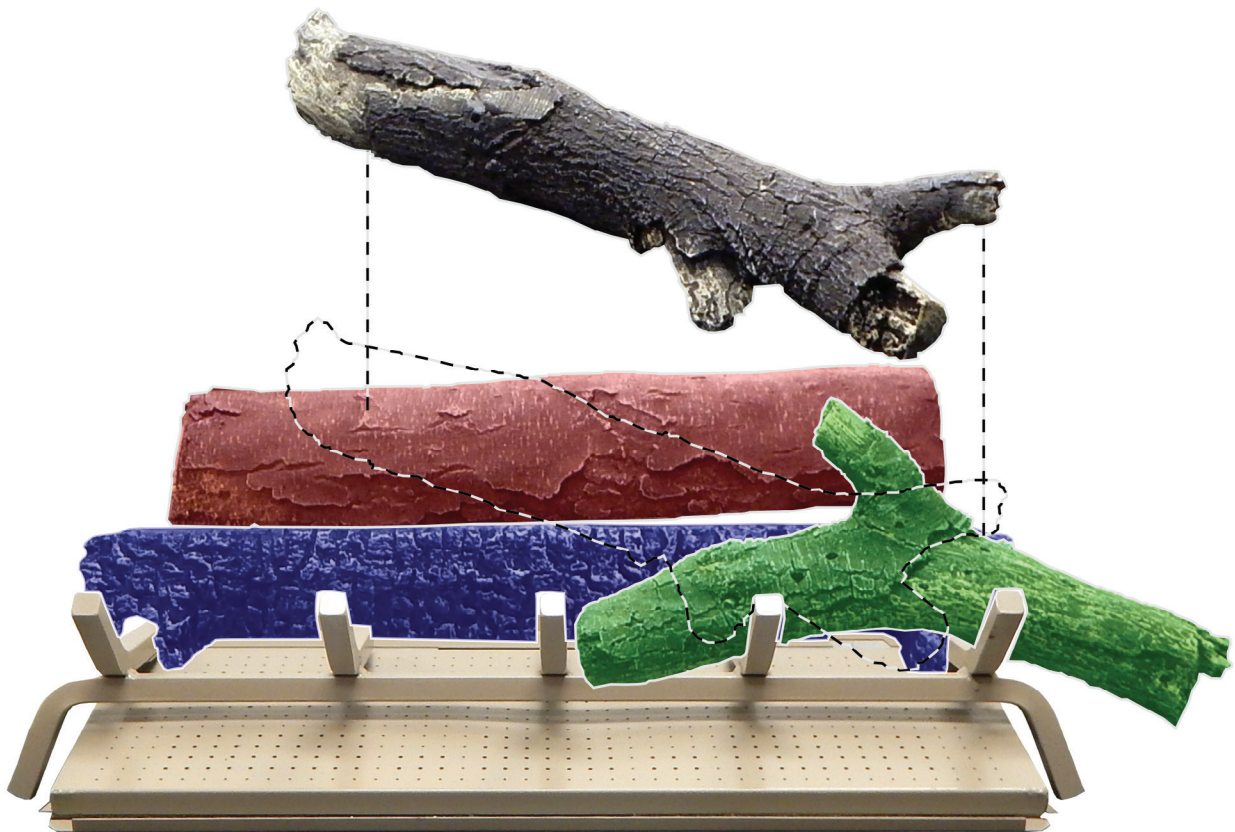
FRONT VIEW

LPR2430-1 LOG PLACEMENT ON BF(L,M,R)30

4. Place **Log (C)** onto top left side of **Log (A)**, and against top left side of **Log (B)**.



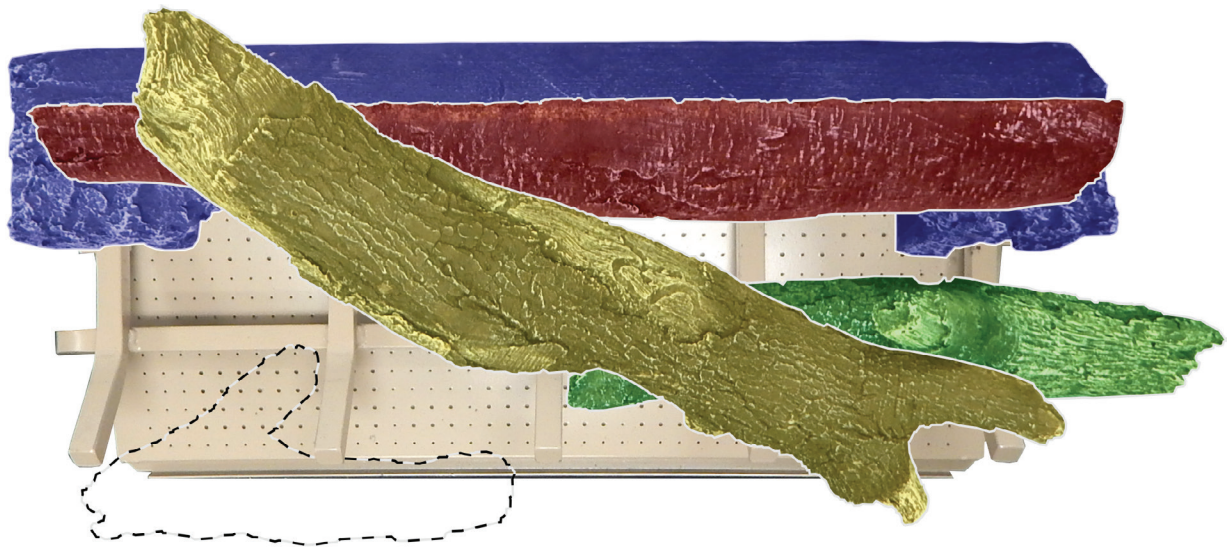
TOP VIEW



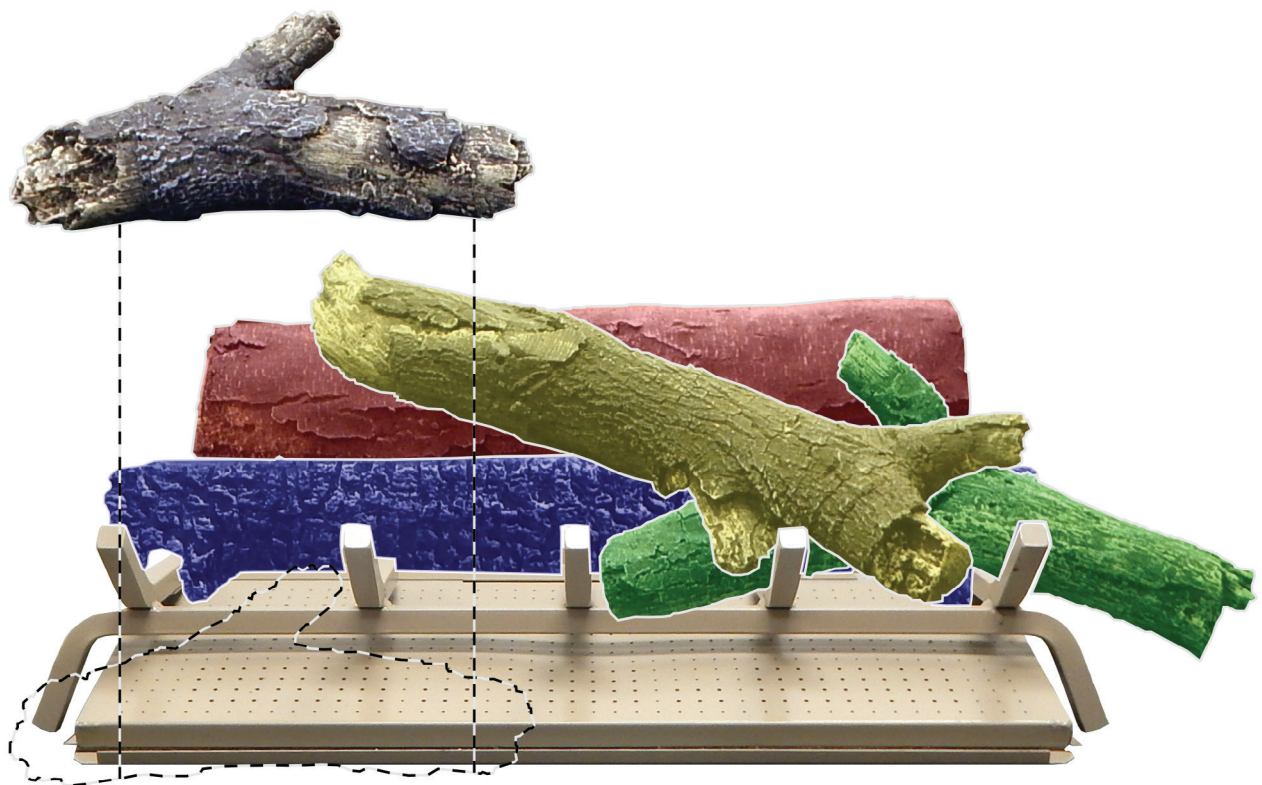
FRONT VIEW

LPR2430-1 LOG PLACEMENT ON BF(L,M,R)30

5. Place **Log (F)** onto front left side of burner pan.



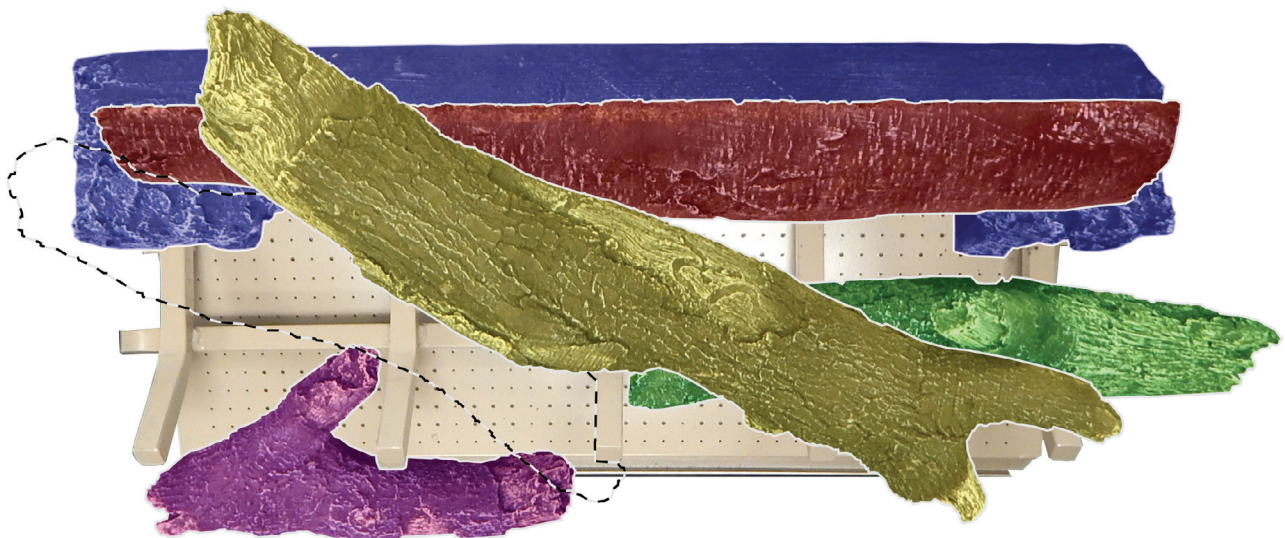
TOP VIEW



FRONT VIEW

LPR2430-1 LOG PLACEMENT ON BF(L,M,R)30

6. Place **Log (L)** onto left side of burner pan, and against top right side of **Log (F)**.



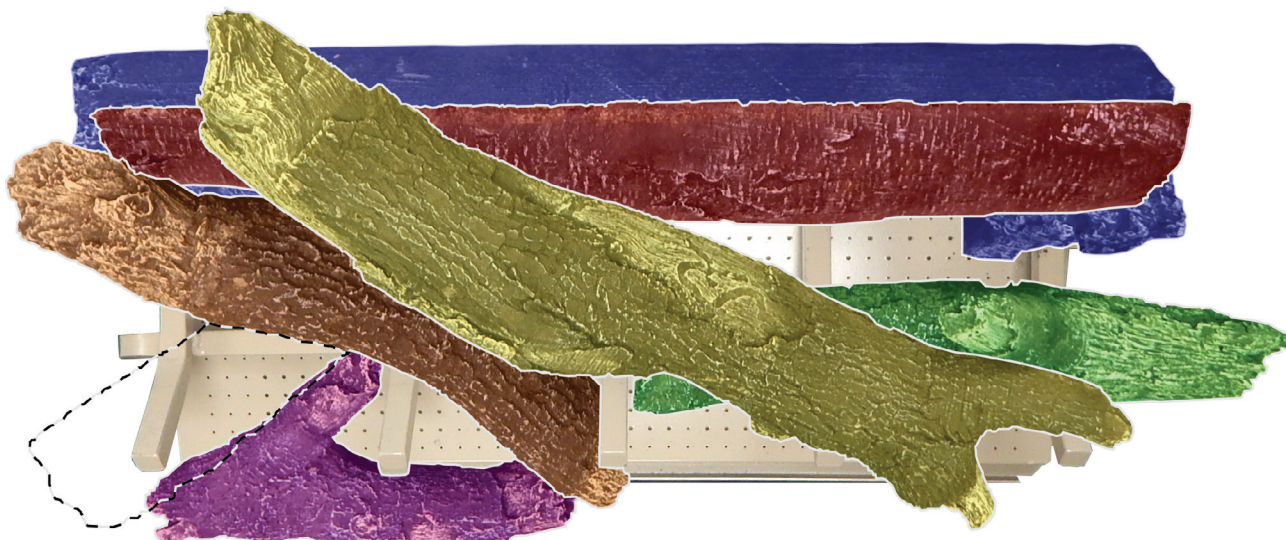
TOP VIEW



FRONT VIEW

LPR2430-1 LOG PLACEMENT ON BF(L,M,R)30

7. Place **Log (E)** onto front left side of **Log (D)** and against front left side of burner pan.



TOP VIEW



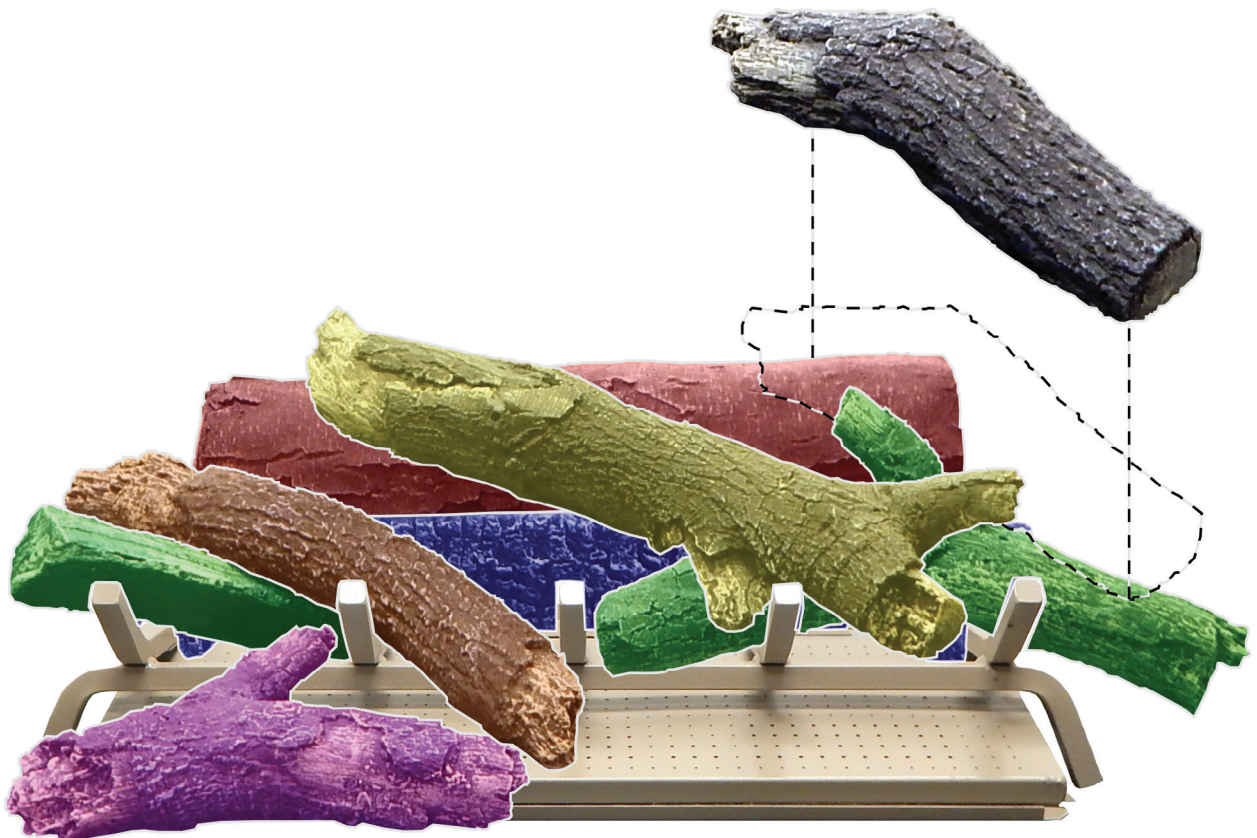
FRONT VIEW

LPR2430-1 LOG PLACEMENT ON BF(L,M,R)30

8. Place **Log (J)** onto top right end of **Log (A)**, and against top right end of **Log (B)**.



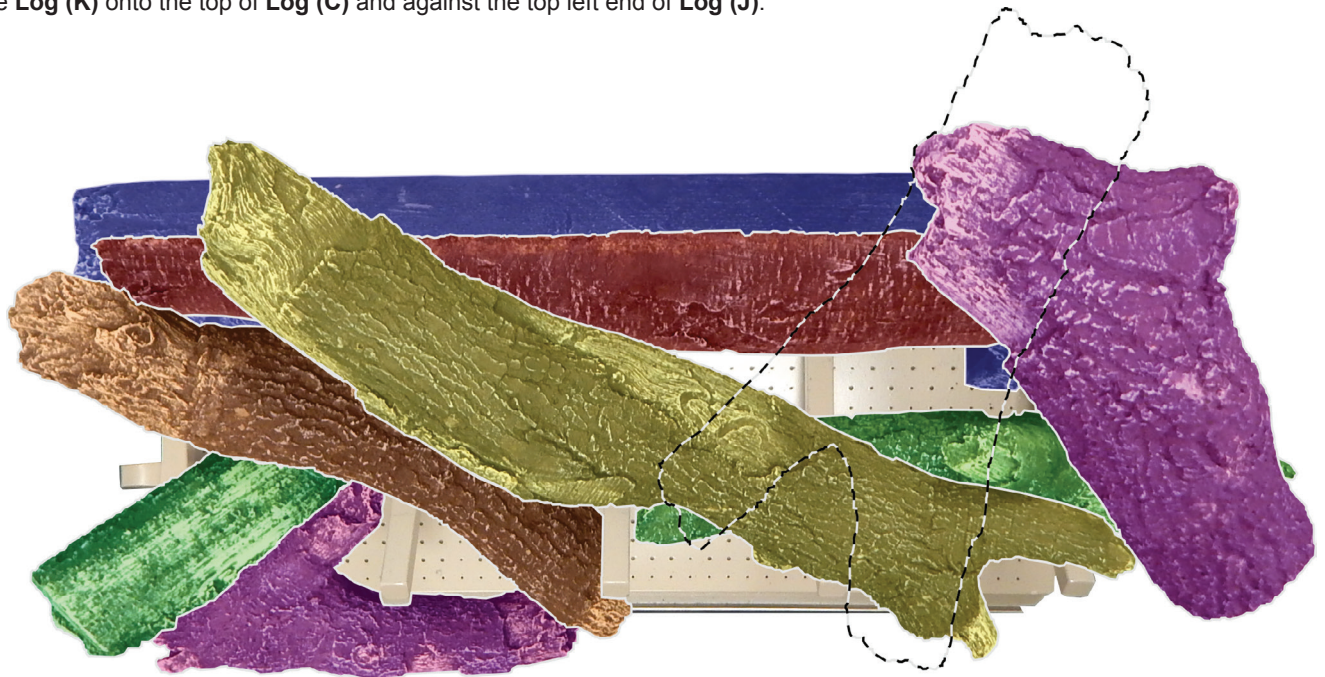
TOP VIEW



FRONT VIEW

LPR2430-1 LOG PLACEMENT ON BF(L,M,R)30

9. Place **Log (K)** onto the top of **Log (C)** and against the top left end of **Log (J)**.



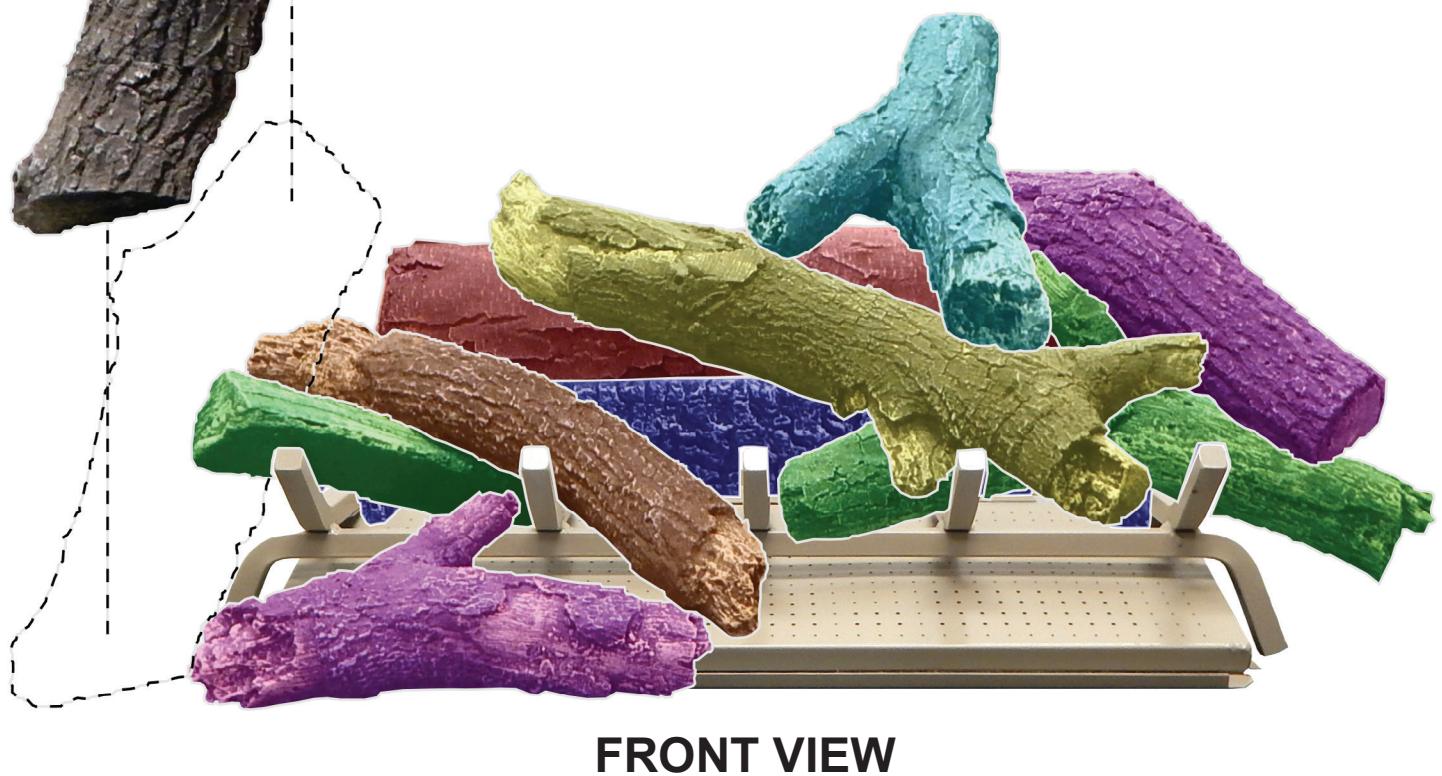
TOP VIEW



FRONT VIEW

LPR2430-1 LOG PLACEMENT ON BF(L,M,R)30

10. Place **Log (H)** onto the top left end of **Log (L)** and against the front left side of burner pan.



LPR2430-1 LOG PLACEMENT ON BF(L,M,R)30

11. Place **Log (?)** onto top of **Log (A)**, and against top left side of **Log (E)**.



TOP VIEW



FRONT VIEW

LPR2430-1 LOG PLACEMENT ON BF(L,M,R)30

12. Place **Log (J)** against front right side of burner pan.



TOP VIEW



FRONT VIEW

LPR2430-1 LOG PLACEMENT ON BF(L,M,R)30

13. Place **Log (?)** onto top of **Log (E)** and against top of burner pan.



TOP VIEW



FRONT VIEW

LPR2430-1 LOG PLACEMENT ON BF(L,M,R)30

14. Log placement is complete.



TOP VIEW



FRONT VIEW

APPLIANCE SERVICE HISTORY

[illegible]

APPLIANCE SERVICE HISTORY

[illegible]

APPLIANCE SERVICE HISTORY

[illegible]

MASTER PARTS DISTRIBUTOR LIST

To Order Parts Under Warranty, please contact your local Empire dealer. See the dealer locator at www.empirecomfort.com. To provide warranty service, your dealer will need your name and address, purchase date and serial number, and the nature of the problem with the unit.

To Order Parts After the Warranty Period, please contact your dealer or one of the Master Parts Distributors listed below. This list changes from time to time. For the current list, please click on the Master Parts button at www.empirecomfort.com. Please note: Master Parts Distributors are independent businesses that stock the most commonly ordered Original Equipment repair parts for Heaters, Grills, and Fireplaces manufactured by Empire Comfort Systems Inc.

Dey Distributing

1401 Willow Lake Boulevard
Vadnais Heights, MN 55101

Phone: 651-490-9191

Toll Free: 800-397-1339

Website: www.deydistributing.com

Parts: Heater, Hearth and Grills

F. W. Webb Company

200 Locust Street
Hartford, CT 06114

Phone: 860-722-2433

Toll Free: 800-243-9360

Fax: 860-293-0479

Toll Free Fax: 800-274-2004

Websites: www.fwwebb.com & www.victormfg.com

Parts: Heater, Hearth and Grills

East Coast Energy Products

10 East Route 36
West Long Branch, NJ 07764

Phone: 732-870-8809

Toll Free: 800-755-8809

Fax: 732-870-8811

Website: www.eastcoastenergy.com

Parts: Heater, Hearth and Grills

HOW TO ORDER REPAIR PARTS

Parts Not Under Warranty

Parts can be ordered through your Service Person, Dealer, or a Master Parts Distributor. See this page for the Master Parts Distributors list. For best results, the **service person or dealer** should order parts through the distributor. Parts can be shipped directly to the **service person/dealer**.

Warranty Parts

Warranty parts will need a proof of purchase and can be ordered by your Service Person or Dealer. Proof of purchase is **required** for warranty parts.

All parts listed in the Parts List have a Part Number. When ordering parts, first obtain the Model Number and Serial Number from the name plate on your equipment. Then determine the Part Number (**not** the Index Number) and the Description of each part from the following illustration and part list. Be sure to give all this information . . .

Appliance Model Number _____ Part Description _____

Appliance Serial Number _____ Part Number _____

Do not order bolts, screws, washers or nuts. They are standard hardware items and can be purchased at any local hardware store.

Shipments contingent upon strikes, fires and all causes beyond our control.



SINCE 1932

Empire Comfort Systems Inc.
Belleville, IL

If you have a general question
about our products, please e-mail
us at info@empirecomfort.com.

If you have a service or repair
question, please contact your dealer.

www.empirecomfort.com